

Brocade 5600 vRouter OpenVPN Configuration Guide

Supporting Brocade 5600 vRouter 4.2R1

© 2016, Brocade Communications Systems, Inc. All Rights Reserved.

Brocade, Brocade Assurance, the B-wing symbol, ClearLink, DCX, Fabric OS, HyperEdge, ICX, MLX, MyBrocade, OpenScript, VCS, VDX, Vplane, and Vyatta are registered trademarks, and Fabric Vision is a trademark of Brocade Communications Systems, Inc., in the United States and/or in other countries. Other brands, products, or service names mentioned may be trademarks of others.

Notice: This document is for informational purposes only and does not set forth any warranty, expressed or implied, concerning any equipment, equipment feature, or service offered or to be offered by Brocade. Brocade reserves the right to make changes to this document at any time, without notice, and assumes no responsibility for its use. This informational document describes features that may not be currently available. Contact a Brocade sales office for information on feature and product availability. Export of technical data contained in this document may require an export license from the United States government.

The authors and Brocade Communications Systems, Inc. assume no liability or responsibility to any person or entity with respect to the accuracy of this document or any loss, cost, liability, or damages arising from the information contained herein or the computer programs that accompany it.

The product described by this document may contain open source software covered by the GNU General Public License or other open source license agreements. To find out which open source software is included in Brocade products, view the licensing terms applicable to the open source software, and obtain a copy of the programming source code, please visit <http://www.brocade.com/support/oscd>.

Contents

Preface	7
Document conventions.....	7
Text formatting conventions.....	7
Command syntax conventions.....	7
Notes, cautions, and warnings.....	8
Brocade resources.....	8
Contacting Brocade Technical Support.....	8
Brocade customers.....	8
Brocade OEM customers.....	9
Document feedback.....	9
About This Guide	11
OpenVPN Overview	13
OpenVPN security mechanisms.....	13
Preshared secret.....	13
TLS.....	13
OpenVPN modes of operation.....	14
Site-to-site operation.....	14
Remote access operation.....	15
Client-Side access to OpenVPN access server.....	16
OpenVPN Configuration	19
Basic usage scenarios.....	19
Site-to-site mode with preshared secret.....	19
Site-to-site mode with TLS.....	22
Client-server mode.....	24
OpenVPN clients on windows hosts.....	27
Firewall configuration.....	27
OpenVPN access server.....	28
Advanced OpenVPN options.....	30
Transport protocol (site-to-site, client, server).....	31
Cryptographic algorithms (site-to-site, client, server).....	32
Split Tunneling (site-to-site, client, server)	32
Broadcast network (site-to-site, client, server).....	33
Multiple remote endpoints (client only).....	34
Client-server topology (server only).....	35
Client-specific settings (server only).....	35
Using unsupported OpenVPN options.....	38
The openvpn-option configuration attribute.....	38
Brocade SSL-VPN Client Bundler	41
Overview.....	41
Supported operating systems.....	41
Client bundles.....	41
Administration of the client bundle.....	42
Generating the client bundle.....	42
Authentication of the client bundle.....	44

Service-User web portal.....	45
Maintenance of SSL-VPN client bundles.....	46
Deploying the SSL-VPN client bundle.....	46
SSL-VPN client connection.....	48
Obtaining the SSL-VPN client bundle.....	48
Installing the SSL-VPN client bundle.....	49
Configuring OpenVPN LDAP Authentication.....	59
Configuring LDAP authentication.....	59
Configuring LDAP authentication without client certificates.....	59
OpenVPN Commands.....	61
generate openvpn key <filename>.....	63
interfaces openvpn <vtunx>.....	64
interfaces openvpn <vtunx> description <description>.....	65
interfaces openvpn <vtunx> device-type tap.....	66
interfaces openvpn <vtunx> disable.....	67
interfaces openvpn <vtunx> encryption <algorithm>.....	68
interfaces openvpn <vtunx> firewall <action>.....	69
interfaces openvpn <vtunx> hash <algorithm>.....	70
interfaces openvpn <vtunx> ipv6 address.....	71
interfaces openvpn <vtunx> ipv6 disable-forwarding.....	73
interfaces openvpn <vtunx> ipv6 dup-addr-detect-transmits <number>.....	74
interfaces openvpn <vtunx> ipv6 router-advert.....	75
interfaces openvpn <vtunx> local-address <ipv4>.....	79
interfaces openvpn <vtunx> local-host <ipv4>.....	80
interfaces openvpn <vtunx> local-port <port>.....	81
interfaces openvpn <vtunx> mode <mode>.....	82
interfaces openvpn <vtunx> openvpn-option <options>.....	83
interfaces openvpn <vtunx> protocol <protocol>.....	84
interfaces openvpn <vtunx> remote-address <ipv4>.....	85
interfaces openvpn <vtunx> remote-configuration password <password>.....	86
interfaces openvpn <vtunx> remote-configuration server <address>.....	87
interfaces openvpn <vtunx> remote-configuration tunnel-password <password>.....	88
interfaces openvpn <vtunx> remote-configuration tunnel-username <username>.....	89
interfaces openvpn <vtunx> remote-configuration username <username>.....	90
interfaces openvpn <vtunx> remote-host <hostname>.....	91
interfaces openvpn <vtunx> remote-port <port>.....	92
interfaces openvpn <vtunx> replace-default-route.....	93
interfaces openvpn <vtunx> server.....	94
interfaces openvpn <vtunx> server client <client-name>.....	95
interfaces openvpn <vtunx> server client <client-name> disable.....	96
interfaces openvpn <vtunx> server client <client-name> ip <ipv4>.....	98
interfaces openvpn <vtunx> server client <client-name> push-route <ipv4net>.....	99
interfaces openvpn <vtunx> server client <client-name> subnet <ipv4net>.....	101
interfaces openvpn <vtunx> server domain-name <domain-name>.....	102
interfaces openvpn <vtunx> server max-connections <number>.....	103
interfaces openvpn <vtunx> server name-server <ipv4>.....	104
interfaces openvpn <vtunx> server push-route <ipv4net>.....	105
interfaces openvpn <vtunx> server subnet <ipv4net>.....	106
interfaces openvpn <vtunx> server topology <topology>.....	107

interfaces openvpn <vtunx> shared-secret-key-file <filename>.....	108
interfaces openvpn <vtunx> tls.....	109
interfaces openvpn <vtunx> tls ca-cert-file <filename>.....	110
interfaces openvpn <vtunx> tls cert-file <filename>.....	111
interfaces openvpn <vtunx> tls crl-file <filename>.....	112
interfaces openvpn <vtunx> tls dh-file <filename>.....	113
interfaces openvpn <vtunx> tls key-file <filename>.....	114
interfaces openvpn <vtunx> tls role <role>.....	115
monitor interfaces openvpn <vtunx> traffic.....	116
reset openvpn interface <vtunx>.....	117
reset openvpn interface <vtunx> client <client-name>.....	118
show interfaces openvpn.....	119
show interfaces openvpn <interface>.....	120
show interfaces openvpn <interface> brief.....	121
show interfaces openvpn detail.....	122
show openvpn client status.....	123
show openvpn server status.....	124
show openvpn site-to-site status.....	125
Related commands.....	125
List of Acronyms.....	127

Preface

- Document conventions..... 7
- Brocade resources..... 8
- Contacting Brocade Technical Support..... 8
- Document feedback..... 9

Document conventions

The document conventions describe text formatting conventions, command syntax conventions, and important notice formats used in Brocade technical documentation.

Text formatting conventions

Text formatting conventions such as boldface, italic, or Courier font may be used in the flow of the text to highlight specific words or phrases.

Format	Description
bold text	Identifies command names Identifies keywords and operands Identifies the names of user-manipulated GUI elements
<i>italic text</i>	Identifies text to enter at the GUI Identifies emphasis Identifies variables
Courier font	Identifies document titles Identifies CLI output Identifies command syntax examples

Command syntax conventions

Bold and italic text identify command syntax components. Delimiters and operators define groupings of parameters and their logical relationships.

Convention	Description
bold text	Identifies command names, keywords, and command options.
<i>italic text</i>	Identifies a variable.
value	In Fibre Channel products, a fixed value provided as input to a command option is printed in plain text, for example, --show WWN.
[]	Syntax components displayed within square brackets are optional.
{ x y z }	Default responses to system prompts are enclosed in square brackets. A choice of required parameters is enclosed in curly brackets separated by vertical bars. You must select one of the options.
x y	In Fibre Channel products, square brackets may be used instead for this purpose. A vertical bar separates mutually exclusive elements.
< >	Nonprinting characters, for example, passwords, are enclosed in angle brackets.

Convention	Description
...	Repeat the previous element, for example, <i>member{member...}</i> .
\	Indicates a "soft" line break in command examples. If a backslash separates two lines of a command input, enter the entire command at the prompt without the backslash.

Notes, cautions, and warnings

Notes, cautions, and warning statements may be used in this document. They are listed in the order of increasing severity of potential hazards.

NOTE

A Note provides a tip, guidance, or advice, emphasizes important information, or provides a reference to related information.

ATTENTION

An Attention statement indicates a stronger note, for example, to alert you when traffic might be interrupted or the device might reboot.



CAUTION

A Caution statement alerts you to situations that can be potentially hazardous to you or cause damage to hardware, firmware, software, or data.



DANGER

A Danger statement indicates conditions or situations that can be potentially lethal or extremely hazardous to you. Safety labels are also attached directly to products to warn of these conditions or situations.

Brocade resources

Visit the Brocade website to locate related documentation for your product and additional Brocade resources.

You can download additional publications supporting your product at www.brocade.com. Select the Brocade Products tab to locate your product, then click the Brocade product name or image to open the individual product page. The user manuals are available in the resources module at the bottom of the page under the Documentation category.

To get up-to-the-minute information on Brocade products and resources, go to MyBrocade. You can register at no cost to obtain a user ID and password.

Release notes are available on MyBrocade under Product Downloads.

White papers, online demonstrations, and data sheets are available through the Brocade website.

Contacting Brocade Technical Support

As a Brocade customer, you can contact Brocade Technical Support 24x7 online, by telephone, or by e-mail. Brocade OEM customers contact their OEM/Solutions provider.

Brocade customers

For product support information and the latest information on contacting the Technical Assistance Center, go to <http://www.brocade.com/services-support/index.html>.

If you have purchased Brocade product support directly from Brocade, use one of the following methods to contact the Brocade Technical Assistance Center 24x7.

Online	Telephone	E-mail
Preferred method of contact for non-urgent issues: <ul style="list-style-type: none"> • My Cases through MyBrocade • Software downloads and licensing tools • Knowledge Base 	Required for Sev 1-Critical and Sev 2-High issues: <ul style="list-style-type: none"> • Continental US: 1-800-752-8061 • Europe, Middle East, Africa, and Asia Pacific: +800-AT FIBREE (+800 28 34 27 33) • For areas unable to access toll free number: +1-408-333-6061 • Toll-free numbers are available in many countries. 	support@brocade.com Please include: <ul style="list-style-type: none"> • Problem summary • Serial number • Installation details • Environment description

Brocade OEM customers

If you have purchased Brocade product support from a Brocade OEM/Solution Provider, contact your OEM/Solution Provider for all of your product support needs.

- OEM/Solution Providers are trained and certified by Brocade to support Brocade® products.
- Brocade provides backline support for issues that cannot be resolved by the OEM/Solution Provider.
- Brocade Supplemental Support augments your existing OEM support contract, providing direct access to Brocade expertise. For more information, contact Brocade or your OEM.
- For questions regarding service levels and response times, contact your OEM/Solution Provider.

Document feedback

To send feedback and report errors in the documentation you can use the feedback form posted with the document or you can e-mail the documentation team.

Quality is our first concern at Brocade and we have made every effort to ensure the accuracy and completeness of this document. However, if you find an error or an omission, or you think that a topic needs further development, we want to hear from you. You can provide feedback in two ways:

- Through the online feedback form in the HTML documents posted on www.brocade.com.
- By sending your feedback to documentation@brocade.com.

Provide the publication title, part number, and as much detail as possible, including the topic heading and page number if applicable, as well as your suggestions for improvement.

About This Guide

This guide describes how to configure OpenVPN on the Brocade 5600 vRouter (referred to as a virtual router, vRouter, or router in the guide).

OpenVPN Overview

- [OpenVPN security mechanisms.....](#)13
- [OpenVPN modes of operation.....](#)14

OpenVPN security mechanisms

This section provides an introduction to the security mechanisms and modes of operation for OpenVPN on the Brocade vRouter.

- Preshared secret
- TLS

The security requirements for a virtual private network include authentication, confidentiality, and integrity. OpenVPN offers a choice of two different security mechanisms: preshared secret and Transport Security Layer (TLS).

NOTE

Secure Sockets Layer (SSL) is the predecessor of TLS, and most current references to SSL are, in fact, references to TLS. Therefore, these terms are used interchangeably in this document.

Preshared secret

When preshared secret is used for security, OpenVPN works as follows:

1. The administrator uses the **generate vpn openvpn-key** command to generate a file that contains a certain number of random data bytes, that is, the secret to be used to provide security.
2. The administrator transfers the secret file to each of the two tunnel endpoints by using pre-established secure channels. For example, the file can be generated on one of the endpoints and then transferred to the other endpoint by using a secure file transfer protocol, such as SCP.
3. When the two endpoints need to establish the VPN tunnel, the OpenVPN process on the one endpoint authenticates the other endpoint. Authentication is based on the assumption that the preshared secret is known only to the other endpoint; that is, authentication is based on the assumption that if any host knows the shared secret, that host must be the other endpoint.
4. After the endpoints are authenticated, the OpenVPN process on each side derives a set of keys from the preshared secret. These keys are used for two purposes.
 - Some keys are used in an encryption algorithm to encrypt the tunnel data. This encryption provides data confidentiality.
 - The others are used in a message authentication code (MAC) that uses a hash algorithm with the keys on the tunnel data. This code provides data integrity.

TLS

Transport Layer Security (TLS) is a cryptographic protocol that uses public key cryptography and does not require the two endpoints to have a preshared secret. OpenVPN uses TLS with X.509 certificates and requires public key infrastructure (PKI) to generate the certificates. When TLS is used, OpenVPN works as follows:

1. Using PKI, the administrator generates a certificate and the associated files for each endpoint. All certificates are "signed" by the certificate authority (CA) of the PKI. The certificate for an endpoint contains many pieces of information, one of which is the name of the endpoint, which is stored in the Common Name field of the certificate.
2. The administrator transfers each certificate and the associated files to the corresponding endpoint by using a pre-established, secure channel (for example, SCP).

3. When two endpoints need to establish the VPN tunnel, one endpoint takes a passive role while the other endpoint must take an active role and initiate the TLS session with the passive endpoint.
4. After the active endpoint initiates the TLS session, the two sides authenticate each other by using their public-private key pairs and the public key of the CA, which is known to both endpoints.
5. After the two endpoints have authenticated each other, they establish a shared secret by using public-key cryptography. Each endpoint then derives a set of keys for the session. As for the preshared secret mechanism, these keys are then used for encryption and MAC on the tunnel data to provide data confidentiality and integrity. However, unlike the preshared secret mechanism, these keys are used only for the one session, and for this reason they are called "session keys."

Certificate generation and distribution using PKI involves numerous complex security issues, which are outside the scope of this document.

OpenVPN modes of operation

OpenVPN supports both site-to-site and remote access operation. In addition, client-side remote access support is available for accessing configuration information from an OpenVPN Access Server.

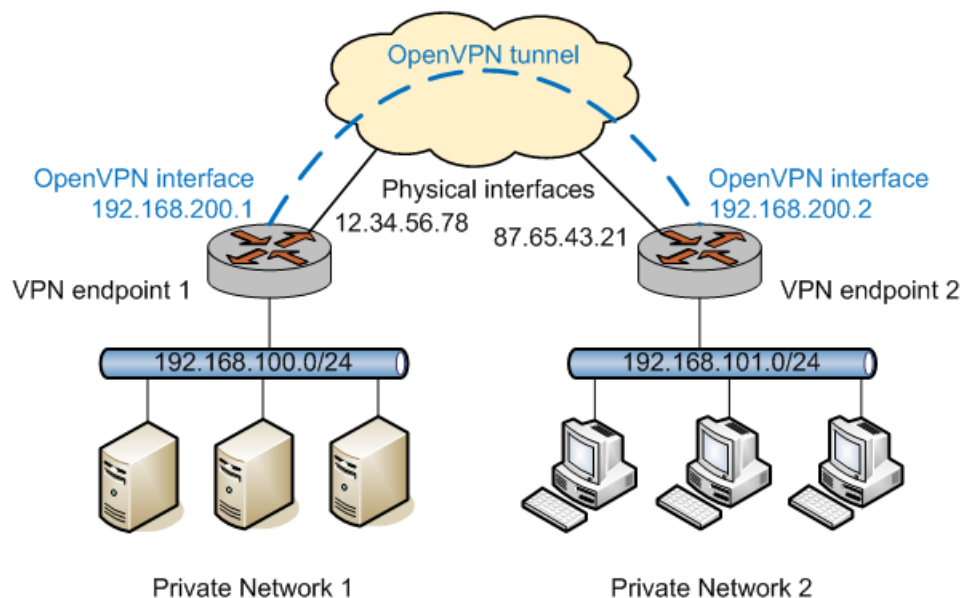
NOTE

If client-side access to OpenVPN Access Server is configured, all OpenVPN configuration parameters other than those used to connect to OpenVPN Access Server (that is, those within the `interfaces openvpn vtunx remote-configuration` command) are ignored.

Site-to-site operation

The following figure illustrates a simple site-to-site VPN operation. This operation could represent, for example, a connection between a branch office and a data center.

FIGURE 1 Site-to-site operation



At each of the two VPN tunnel endpoints, the OpenVPN process creates a routable “tunnel interface” and establishes a secure tunnel with the other endpoint. Subsequently, the two interfaces appear to be on the same network, although packets flowing between these two interfaces are actually processed and sent through the secure tunnel by the OpenVPN process.

Note that each endpoint has two relevant IP addresses.

- The tunnel IP address: This address is the virtual IP address (VIP) on each end of the tunnel. The tunnel IP address at each end of the tunnel must be on the same subnet. In the previous figure, the tunnel IP addresses of the two endpoints are 192.168.200.1 and 192.168.200.2.
- The physical IP address: This address is the IP address that is configured for the physical network interface over which the VPN tunnel is established. In the preceding figure, the physical IP addresses of the two endpoints are 12.34.56.78 and 87.65.43.21.

In most operations, the VPN tunnel transports traffic from different private subnets across the wide area network (WAN). In the preceding figure, each of the 192.168.100.0/24 and 192.168.101.0/24 private subnets is “behind” a VPN tunnel endpoint. Therefore, on each endpoint, you must add a static route that directs traffic to and from the remote private subnet through the tunnel interface.

In site-to-site mode, a single host can establish multiple OpenVPN tunnels, each of which may be to distinct sites. Even if all tunnels originate from a single physical interface, each tunnel is represented by a different tunnel interface IP address and operates independently.

Remote access operation

OpenVPN also supports remote access VPN that uses a client-server mode. In this mode, one OpenVPN endpoint acts as the server and all remote endpoints operate as clients, which connect to the OpenVPN server to establish VPN tunnels, so that each established client has an independent tunnel to the server. The following figure shows a simple remote access VPN setup.

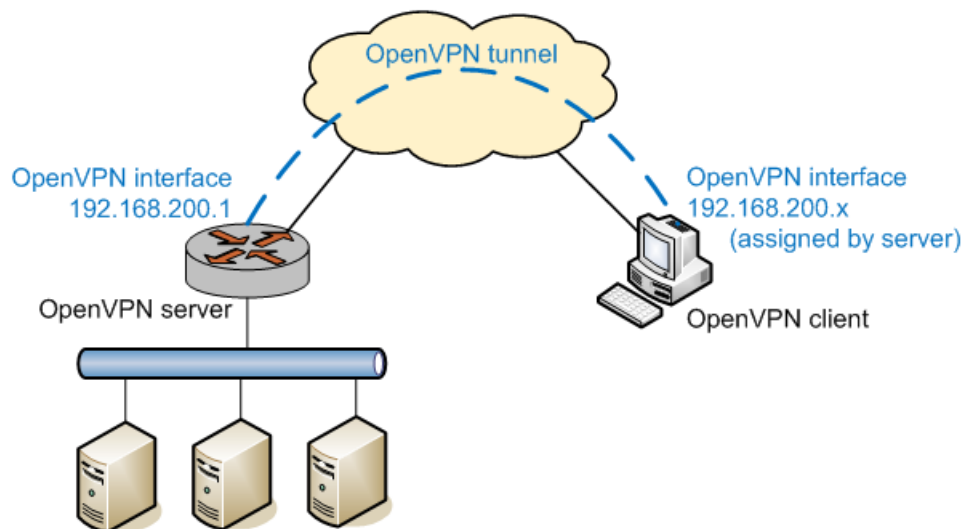


FIGURE 2 Remote access operation

One major difference between site-to-site mode and client-server mode is that in client-server mode, all the VPN tunnels on the server side terminate at a single tunnel interface. A single termination point eliminates the need to set up separate tunnel interface IP addresses for each VPN tunnel. This single termination point is more convenient and operationally simpler for a remote access setup.

Another difference is that in client-server mode, the server-side OpenVPN process dynamically allocates all tunnel IP addresses from a configured subnet (192.168.200.0/24 in the example) instead of using fixed tunnel IP addresses for tunnel endpoints. Thus, when the OpenVPN process starts on the server, it creates the tunnel interface and assigns it an IP address from the subnet to the interface (for example, 192.168.200.1). Then, when a client establishes a VPN tunnel with the server, the server-side OpenVPN process also allocates the client an IP address from the same subnet (for example, 192.168.200.4) and the tunnel interface on the client adopts this address.

Client-Side access to OpenVPN access server

OpenVPN Access Server is a server that authenticates remote client access requests (either locally or through an authentication server) and provides OpenVPN tunnel configuration information to the requesting client. It also provides OpenVPN client software if the client requires it, although this is not required for Brocade vRouter clients. The configuration information allows the client to then establish an OpenVPN tunnel and an OpenVPN server with minimal configuration on the client side.

The sequence of events is as follows:

1. An administrator configures OpenVPN Access Server for Brocade vRouter client access and, potentially, configures a separate authentication server and OpenVPN server. The client requires only configuration information from the server. It does not require client software.

NOTE

It is possible for OpenVPN Access Server to act as the access server, authentication server, and OpenVPN server.

NOTE

OpenVPN Access Server is not available from Brocade. It is available from OpenVPN Technologies, Inc. at <http://openvpn.net>.

2. The Brocade vRouter client accesses OpenVPN Access Server and provides a username and password.
3. OpenVPN Access Server authenticates the user, either acting as its own authentication server or by using an external authentication server, such as a RADIUS server.
4. After authentication, OpenVPN Access Server sends the Brocade vRouter client device the configuration information needed to establish an OpenVPN tunnel with an OpenVPN server.
5. The Brocade vRouter client then establishes an OpenVPN tunnel with the OpenVPN server specified in the downloaded configuration and is provided an IP address on the OpenVPN tunnel subnet.

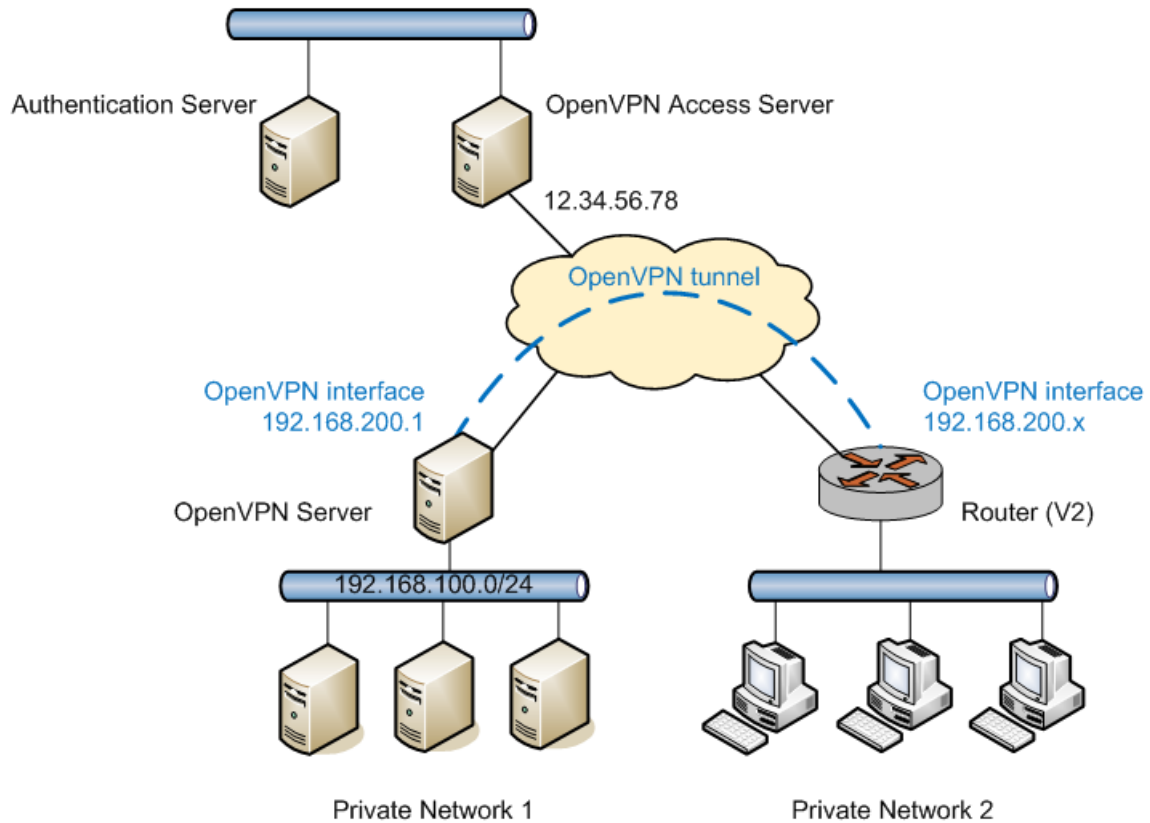
NOTE

If the OpenVPN server is configured such that Autologin is enabled, then a tunnel username and tunnel password are not required; otherwise, they are required to establish the VPN tunnel.

The Brocade vRouter has the OpenVPN client software preloaded and can use OpenVPN Access Server to obtain the information needed to establish an OpenVPN tunnel with an OpenVPN server. The only required configuration information is the IP address or host name of OpenVPN Access Server, a username and password for OpenVPN Access Server, and, potentially, the tunnel username and tunnel password for establishing the tunnel with the OpenVPN server.

The following figure shows an OpenVPN setup that uses OpenVPN Access Server, an authentication server, and an OpenVPN server.

FIGURE 3 Client-side access to OpenVPN access server



You can use the **show interfaces** command to show the assigned IP address on the client side of the OpenVPN tunnel.

OpenVPN Configuration

• Basic usage scenarios.....	19
• Advanced OpenVPN options.....	30
• Using unsupported OpenVPN options.....	38

Basic usage scenarios

The following list describes basic scenarios of OpenVPN usage.

- Site-to-Site mode with preshared secret
- Site-to-Site mode with TLS
- Client-Server Mode
- OpenVPN clients on Windows Hosts
- Firewall configuration
- OpenVPN access server

Site-to-site mode with preshared secret

The following figure shows site-to-site VPN configured with preshared secret.

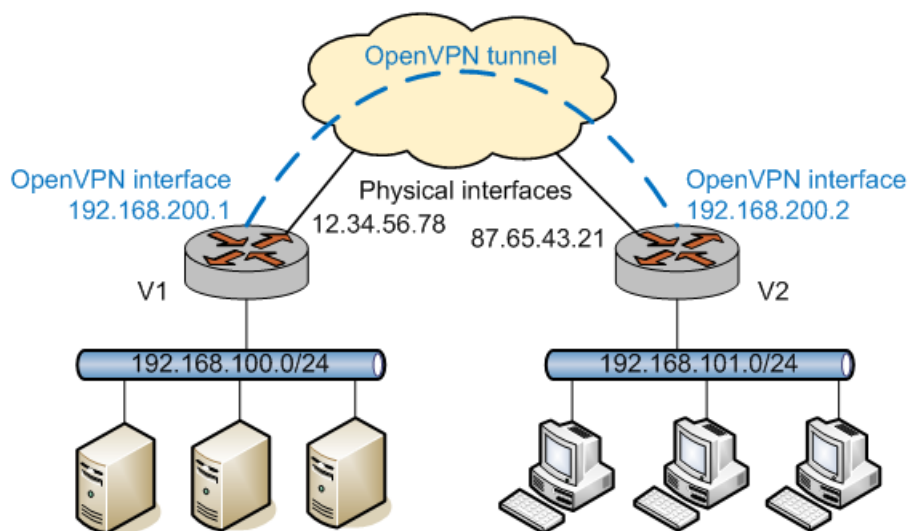
In this example:

- The physical IP addresses for V1 and V2 are 12.34.56.78 and 87.65.43.21, respectively.
- The tunnel IP addresses for V1 and V2 are 192.168.200.1 and 192.168.200.2, respectively.
- The subnet to be accessed from V1 (through V2 over the VPN) is 192.168.100.0/24.
- The subnet to be accessed on V2 (through V1 over the VPN) is 192.168.101.0/24.

To configure an OpenVPN tunnel, you create an interface of the `openvpn` type. The interface name is in the form of `vtunnum`; for example, `vtun0`, `vtun1`, and so on.

In addition, you must add a static interface route to direct traffic for the remote subnet through the `vtun0` tunnel interface. For information on setting up static routes, see *Brocade 5600 vRouter Basic Routing Reference Guide*.

FIGURE 4 Site-to-site VPN with preshared secret



To configure the V1 endpoint, perform the following steps in configuration mode.

TABLE 1 Site-to-site OpenVPN with preshared secret: V1 endpoint

Step	Command
Create the vtun0 configuration node.	<code>vyatta@V1# set interfaces openvpn vtun0</code>
Set the tunnel IP address for the local endpoint.	<code>vyatta@V1# set interfaces openvpn vtun0 local-address 192.168.200.1</code>
Set the OpenVPN mode to site-to-site.	<code>vyatta@V1# set interfaces openvpn vtun0 mode site-to-site</code>
Set the tunnel IP address of the remote endpoint.	<code>vyatta@V1# set interfaces openvpn vtun0 remote-address 192.168.200.2</code>
Specify the physical IP address of the remote host.	<code>vyatta@V1# set interfaces openvpn vtun0 remote-host 87.65.43.21</code>
Specify the location of the file containing the preshared secret.	<code>vyatta@V1# set interfaces openvpn vtun0 shared-secret-key-file /config/auth/secret</code>
Commit the change.	<code>vyatta@V1# commit</code>
Show the OpenVPN configuration.	<code>vyatta@V1# show interfaces openvpn vtun0 local-address 192.168.200.1 mode site-to-site remote-address 192.168.200.2 remote-host 87.65.43.21 shared-secret-key-file /config/auth/secret</code>

To configure a static route to access the remote subnet through the OpenVPN tunnel, perform the following steps in configuration mode.

TABLE 2 Site-to-site OpenVPN with preshared secret: V1 static route

Step	Command
Create the static route to access the remote subnet through the OpenVPN tunnel.	<pre>vyatta@V1# set protocols static interface-route 192.168.101.0/24 next-hop-interface vtun0</pre>
Commit the change.	<pre>vyatta@V1# commit</pre>
Show the static routing configuration.	<pre>vyatta@V1# show protocols static interface-route 192.168.101.0/24 { next-hop-interface vtun0 { } }</pre>

The V2 VPN endpoint is identical to the V1 endpoint, except that local and remote tunnel IP addresses are reversed. To configure the V2 endpoint, perform the following steps in configuration mode.

TABLE 3 Site-to-site OpenVPN with preshared secret: V2 endpoint

Step	Command
Create the vtun0 configuration node.	<pre>vyatta@V2# set interfaces openvpn vtun0</pre>
Set the tunnel IP address for the local endpoint.	<pre>vyatta@V2# set interfaces openvpn vtun0 local- address 192.168.200.2</pre>
Set the OpenVPN mode to site-to-site.	<pre>vyatta@V2# set interfaces openvpn vtun0 mode site- to-site</pre>
Set the tunnel IP address of the remote endpoint.	<pre>vyatta@V2# set interfaces openvpn vtun0 remote- address 192.168.200.1</pre>
Specify the physical IP address of the remote host.	<pre>vyatta@V2#set interfaces openvpn vtun0 remote-host 12.34.56.78</pre>
Specify the location of the file containing the preshared secret.	<pre>vyatta@V2# set interfaces openvpn vtun0 shared- secret-key-file /config/auth/secret</pre>
Commit the change.	<pre>vyatta@V2# commit</pre>
Show the OpenVPN configuration.	<pre>vyatta@V2# show interfaces openvpn vtun0 local-address 192.168.200.2 mode site-to-site remote-address 192.168.200.1 remote-host 12.34.56.78 shared-secret-key-file /config/auth/secret</pre>

Again, the shared secret file (created by generating the key with the **generate openvpn key** command on one system and then copying the key to the other system) must be the same on both endpoints (the path need not be the same, but the content must be). Note also that the **remote-host** option is required only on one of the endpoints; that is, the site-to-site tunnel can be established as long as even one endpoint has enough information to contact the other.

To configure a static route to access the remote subnet through the OpenVPN tunnel, perform the following steps in configuration mode.

TABLE 4 Site-to-site OpenVPN with preshared secret: V2 static route

Step	Command
Create the static route to access the remote subnet through the OpenVPN tunnel.	<pre>vyatta@V2# set protocols static interface-route 192.168.100.0/24 next-hop-interface vtun0</pre>
Commit the change.	<pre>vyatta@V2# commit</pre>
Show the static routing configuration.	<pre>vyatta@V2# show protocols static interface-route 192.168.100.0/24 { next-hop-interface vtun0 { } }</pre>

Site-to-site mode with TLS

When TLS is used in site-to-site mode, the Brocade vRouter configuration is the same as described in the previous section, except that you must configure TLS-related options instead of the **shared-secret-key-file** option. As previously discussed, one endpoint takes the passive role and the other takes the active role.

Each endpoint must also have the following files, which are required for the TLS protocol.

- Certificate Authority (CA) certificate file: This file contains the certificate of the CA, which is used to validate the certificate of the other endpoint.
- Host certificate file: This file contains the certificate of the endpoint, which is presented to the other endpoint during the TLS negotiation.
- Host key file: This file contains the private key of the endpoint, which is kept secret from anybody else.
- Certificate revocation list (CRL) file: (Optional) This file contains a list of certificates that have been revoked, which prevent endpoints with these certificates from establishing a VPN tunnel.
- DH parameters file: (Only needed by the passive endpoint) This file contains Diffie Hellman parameters that are required only by the endpoint taking the passive role in the TLS negotiation.

More information about these files is available in the OpenVPN documentation.

The configuration that follows corresponds to the configuration for the example in the previous section. Assume that the necessary files have been generated and distributed to each endpoint and that V1 and V2 are passive and active, respectively.

To configure V1 for a site-to-site VPN with TLS, perform the following steps in configuration mode.

TABLE 5 V1 OpenVPN configuration: site-to-site with TLS

Step	Command
Create the vtun0 configuration node.	<pre>vyatta@V1# set interfaces openvpn vtun0</pre>
Set the local IP address of the VPN tunnel.	<pre>vyatta@V1# set interfaces openvpn vtun0 local- address 192.168.200.1</pre>
Set the OpenVPN mode.	<pre>vyatta@V1# set interfaces openvpn vtun0 mode site- to-site</pre>
Set the remote IP address of the VPN tunnel.	<pre>vyatta@V1# set interfaces openvpn vtun0 remote- address 192.168.200.2</pre>

TABLE 5 V1 OpenVPN configuration: site-to-site with TLS (continued)

Step	Command
Specify the physical IP address of the remote host.	<pre>vyatta@V1# set interfaces openvpn vtun0 remote-host 87.65.43.21</pre>
Set the role of this endpoint.	<pre>vyatta@V1# set interfaces openvpn vtun0 tls role passive</pre>
Specify the location of the CA certificate file.	<pre>vyatta@V1# set interfaces openvpn vtun0 tls ca-cert-file /config/auth/ca.crt</pre>
Specify the location of the host certificate file.	<pre>vyatta@V1# set interfaces openvpn vtun0 tls cert-file /config/auth/V1.crt</pre>
Specify the location of the CRL parameters file.	<pre>vyatta@V1# set interfaces openvpn vtun0 tls crl-file /config/auth/crl.pem</pre>
Specify the location of the DH file.	<pre>vyatta@V1# set interfaces openvpn vtun0 tls dh-file /config/auth/dh1024.pem</pre>
Specify the location of the host key file.	<pre>vyatta@V1# set interfaces openvpn vtun0 tls key-file /config/auth/V1.key</pre>
Commit the change.	<pre>vyatta@V1# commit</pre>
Show the OpenVPN configuration.	<pre>vyatta@V1# show interfaces openvpn vtun0 local-address 192.168.200.1 mode site-to-site remote-address 192.168.200.2 remote-host 87.65.43.21 tls { role passive ca-cert-file /config/auth/ca.crt cert-file /config/auth/V1.crt crl-file /config/auth/crl.pem dh-file /config/auth/dh1024.pem key-file /config/auth/V1.key }</pre>

Note that the configuration is the same as in the previous section except that the **shared-secret-key-file** option has been replaced by **tls** options. The V1 endpoint takes the passive role, so the **dh-file** option is required. The **crl-file** option is also specified in this example.

To configure V2 for a site-to-site VPN with TLS, perform the following steps in configuration mode.

TABLE 6 V2 OpenVPN configuration: site-to-site with TLS

Step	Command
Create the vtun0 configuration node.	<pre>vyatta@V2# set interfaces openvpn vtun0</pre>
Set the local IP address of the VPN tunnel.	<pre>vyatta@V2# set interfaces openvpn vtun0 local-address 192.168.200.2</pre>
Set the OpenVPN mode.	<pre>vyatta@V2# set interfaces openvpn vtun0 mode site-to-site</pre>

TABLE 6 V2 OpenVPN configuration: site-to-site with TLS (continued)

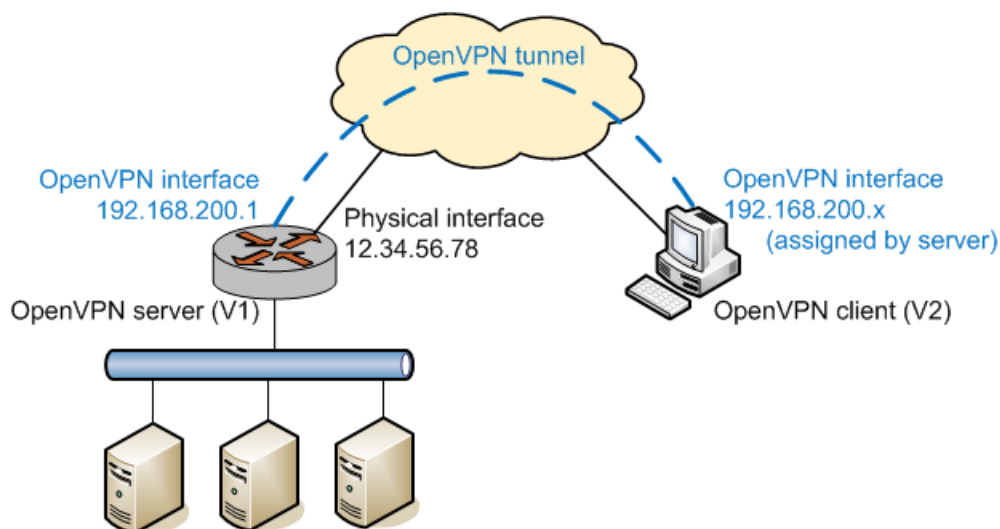
Step	Command
Set the remote IP address of the VPN tunnel.	<pre>vyatta@V2# set interfaces openvpn vtun0 remote-address 192.168.200.1</pre>
Specify the physical IP address of the remote host.	<pre>vyatta@V2# set interfaces openvpn vtun0 remote-host 12.34.56.78</pre>
Set the role of this endpoint.	<pre>vyatta@V2# set interfaces openvpn vtun0 tls role active</pre>
Specify the location of the CA certificate file.	<pre>vyatta@V2# set interfaces openvpn vtun0 tls ca-cert-file /config/auth/ca.crt</pre>
Specify the location of the host certificate file.	<pre>vyatta@V2# set interfaces openvpn vtun0 tls cert-file /config/auth/V2.crt</pre>
Specify the location of the host key file.	<pre>vyatta@V2# set interfaces openvpn vtun0 tls key-file /config/auth/V2.key</pre>
Commit the change.	<pre>vyatta@V2# commit</pre>
Show the OpenVPN configuration.	<pre>vyatta@V2# show interfaces openvpn vtun0 local-address 192.168.200.2 mode site-to-site remote-address 192.168.200.1 remote-host 12.34.56.78 tls { role active ca-cert-file /config/auth/ca.crt cert-file /config/auth/V2.crt key-file /config/auth/V2.key }</pre>

The configuration is the same as in the previous example except that the **tls** option is specified; the **crl-file** option is not specified; and, because the V2 endpoint takes the active role, the **dh-file** option is not needed.

Client-server mode

The following figure illustrates a typical remote access VPN setup in which one OpenVPN endpoint acts as the server. Remote users run OpenVPN as clients to connect to the server and establish VPN tunnels.

FIGURE 5 Client-server mode



Note that OpenVPN requires TLS in client-server mode, and the server takes the passive role while the clients are active. Therefore, it is not necessary to specify the **tls role** option when operating in this mode. In the preceding figure, assuming that V1 is the server and V2 is a client, the configuration for V1 is shown below.

To configure V1 for client-server with TLS, perform the following steps in configuration mode. The example has the following characteristics.

- The **mode** option specifies that this endpoint operates in server mode.
- The **server subnet** option indicates that the tunnel IP address of the client is allocated from the 192.168.200.0/24 subnet and that the tunnel IP address of the server (that is, the address of vtun0 on the server) is 192.168.200.1.
- The **remote-host** option is not set because the clients are actively contacting the server.

TABLE 7 V1 OpenVPN configuration: client-server with TLS (server)

Step	Command
Create the vtun0 configuration node.	<code>vyatta@V1# set interfaces openvpn vtun0</code>
Set the OpenVPN mode.	<code>vyatta@V1# set interfaces openvpn vtun0 mode server</code>
Set the subnet for the OpenVPN tunnel.	<code>vyatta@V1# set interfaces openvpn vtun0 server subnet 192.168.200.0/24</code>
Specify the location of the CA certificate file.	<code>vyatta@V1# set interfaces openvpn vtun0 tls ca-cert-file /config/auth/ca.crt</code>
Specify the location of the host certificate file.	<code>vyatta@V1# set interfaces openvpn vtun0 tls cert-file /config/auth/V1.crt</code>
Specify the location of the CRL parameters file.	<code>vyatta@V1# set interfaces openvpn vtun0 tls crl-file /config/auth/crl.pem</code>

TABLE 7 V1 OpenVPN configuration: client-server with TLS (server) (continued)

Step	Command
Specify the location of the DH file.	<pre>vyatta@V1# set interfaces openvpn vtun0 tls dh-file /config/auth/dh1024.pem</pre>
Specify the location of the host key file.	<pre>vyatta@V1# set interfaces openvpn vtun0 tls key-file /config/auth/V1.key</pre>
Commit the change.	<pre>vyatta@V1# commit</pre>
Show the OpenVPN configuration.	<pre>vyatta@V1# show interfaces openvpn vtun0 mode server server { subnet 192.168.200.0/24 } tls { ca-cert-file /config/auth/ca.crt cert-file /config/auth/V1.crt crl-file /config/auth/crl.pem dh-file /config/auth/dh1024.pem key-file /config/auth/V1.key }</pre>

To configure V2 for client-server with TLS, perform the following steps in configuration mode. This example has the following characteristics.

- V2 is in client mode and so it needs to actively contact the server; therefore, the **remote-host** option is needed to indicate the location of the server.
- When the tunnel is established, the tunnel IP address of V2 (that is, the address of vtun0 on V2) is assigned by V1 from the 192.168.200.0/24 subnet.

TABLE 8 V2 OpenVPN configuration: client-server with TLS (client)

Step	Command
Create the vtun0 configuration node.	<pre>vyatta@V2# set interfaces openvpn vtun0</pre>
Set the OpenVPN mode.	<pre>vyatta@V2# set interfaces openvpn vtun0 mode client</pre>
Specify the physical IP address of the remote host.	<pre>vyatta@V2# set interfaces openvpn vtun0 remote-host 12.34.56.78</pre>
Specify the location of the CA certificate file.	<pre>vyatta@V2# set interfaces openvpn vtun0 tls ca-cert-file /config/auth/ca.crt</pre>
Specify the location of the host certificate file.	<pre>vyatta@V2# set interfaces openvpn vtun0 tls cert-file /config/auth/V2.crt</pre>
Specify the location of the host key file.	<pre>vyatta@V2# set interfaces openvpn vtun0 tls key-file /config/auth/V2.key</pre>
Commit the change.	<pre>vyatta@V2# commit</pre>
Show the OpenVPN configuration.	<pre>vyatta@V2# show interfaces openvpn vtun0 mode client</pre>

TABLE 8 V2 OpenVPN configuration: client-server with TLS (client) (continued)

Step	Command
	<pre>remote-host 12.34.56.78 tls { ca-cert-file /config/auth/ca.crt cert-file /config/auth/V2.crt key-file /config/auth/V2.key }</pre>

OpenVPN clients on windows hosts

As mentioned earlier, OpenVPN is different from and cannot interoperate with the "SSL VPN" solutions on the market, and therefore OpenVPN must be installed on all VPN hosts. In a remote access VPN setup, many remote users will need to connect to the OpenVPN server from hosts that run Windows. To set up the OpenVPN client on a Windows machine, download and install the OpenVPN Windows Installer package from the OpenVPN Web at (<http://openvpn.net/index.php/downloads.html>).

After installation, the OpenVPN client is either run from the Windows command line or controlled by the OpenVPN GUI. Using the setup from the previous section as an example, if the V2 client is a Windows host, the OpenVPN client is run from the command line by issuing the command shown in the following example, using the address, certificate, and key information for your site.

Running OpenVPN from the command line

```
openvpn --dev tun --client --remote ip-address
--ca ca-cert-filename
--cert endpoint-cert-filename
--key endpoint-key-filename
```

This command establishes a VPN tunnel with the V1 OpenVPN server shown in [Table 8](#) on page 26. Note that the referenced files must be in the same directory from which this command is issued. Otherwise, full paths should be used for the files.

Alternatively, to control the OpenVPN client by using the OpenVPN GUI, you must create a control file. The file must be named with the .ovpn extension, for example, vyatta.ovpn. A configuration file that corresponds to the preceding command line would look as shown in the following example (with corresponding changes for your site information).

OpenVPN configuration file

```
dev tun
client
remote 12.34.56.78
ca ca.crt
cert V2.crt
key V2.key
```

Put the configuration file and the referenced files (certificates, etc.) into the OpenVPN configuration directory. This directory is usually `C:\Program files\OpenVPN\config`.

Start the OpenVPN GUI, which shows an icon in the notification area of the Windows taskbar. To establish the OpenVPN tunnel, right-click the icon and select **Connect** from the drop-down menu. If there are multiple .ovpn configuration files, the actions for each configuration appear in the drop-down menu of each file.

Firewall configuration

The firewall configuration for an OpenVPN tunnel interface is the same as the configuration for other types of interfaces. Here is an example.

To configure firewall on V1, perform the following steps in configuration mode.

TABLE 9 V1 OpenVPN firewall configuration

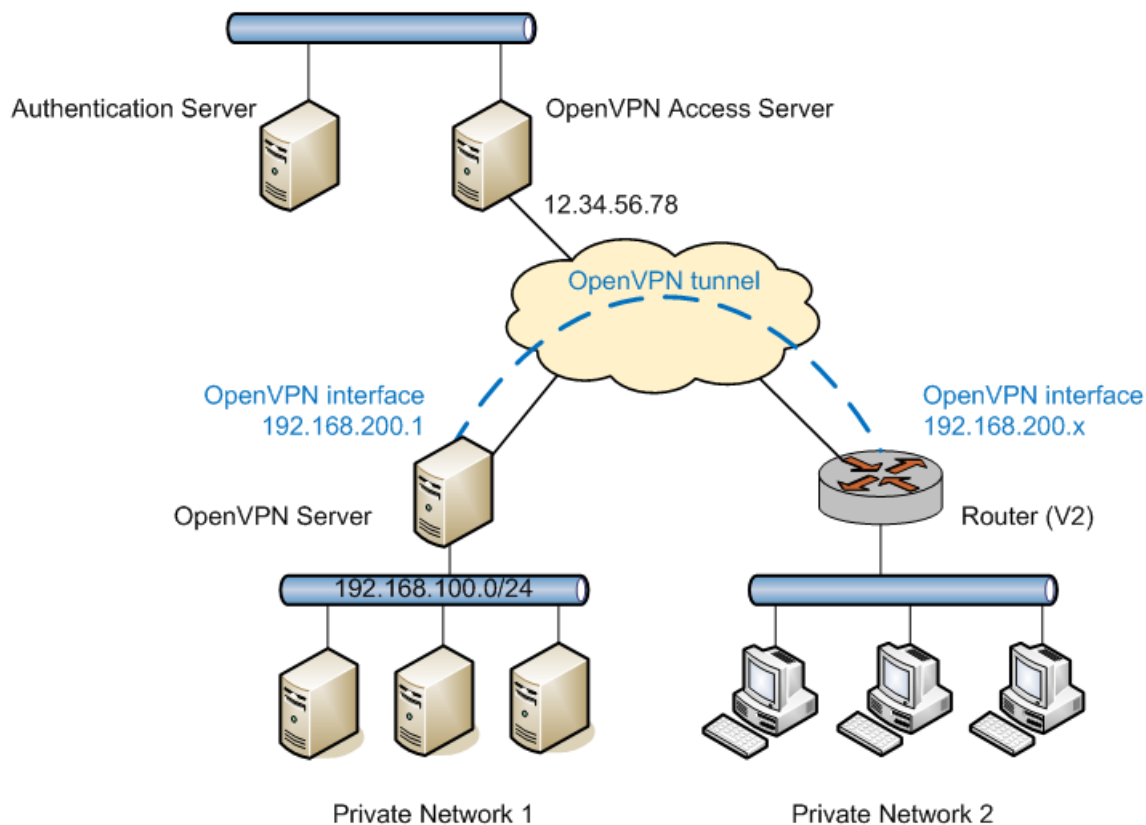
Step	Command
Create the vtun0 configuration node.	<code>vyatta@V1# set interfaces openvpn vtun0</code>
Enter configuration commands.	<code>...</code>
Set the firewall rule for inbound traffic on the vtun0 interface.	<code>vyatta@V1# set interfaces openvpn vtun0 firewall in rules-in</code>
Enter configuration commands.	<code>...</code>
Commit the change.	<code>vyatta@V1# commit</code>
Show the OpenVPN configuration.	<code>vyatta@V1# show interfaces openvpn openvpn vtun0 { firewall { in rules-in } }</code>

For more information on configuring firewall for interfaces, see the firewall chapter in *Brocade 5600 vRouter Firewall Reference Guide*.

OpenVPN access server

Another OpenVPN scenario involves connecting to OpenVPN Access Server and using the configuration information it provides to establish an OpenVPN tunnel to an OpenVPN server. The configuration for this scenario is very simple because the OpenVPN Access Server provides all the necessary VPN configuration information to the connecting host (the Brocade vRouter in this case). The following figure shows a configuration that uses OpenVPN Access Server.

FIGURE 6 Using OpenVPN access server to establish an OpenVPN tunnel



To configure V2 to establish an OpenVPN tunnel to an OpenVPN server using an OpenVPN Access Server as shown in the previous figure, perform the following steps in configuration mode.

TABLE 10 V2: Client-Side connection to OpenVPN access server (Autologin enabled)

Step	Command
Create the vtun0 configuration node.	<code>vyatta@V2# set interfaces openvpn vtun0</code>
Specify the OpenVPN Access Server IP address.	<code>vyatta@V2# set interfaces openvpn vtun0 remote-configuration server 12.34.56.78</code>
Specify the username to be authenticated by OpenVPN Access Server.	<code>vyatta@V2# set interfaces openvpn vtun0 remote-configuration username abcd</code>
Specify the password to be authenticated by OpenVPN Access Server.	<code>vyatta@V2# set interfaces openvpn vtun0 remote-configuration password efgh</code>
Commit the change.	<code>vyatta@V2# commit</code>
Show the configuration.	<code>vyatta@V2# show interfaces openvpn vtun0 remote-configuration { password efgh</code>

TABLE 10 V2: Client-Side connection to OpenVPN access server (Autologin enabled) (continued)

Step	Command
	<pre>server 12.34.56.78 username abcd }</pre>

This example is valid for a scenario in which Autologin is enabled on the OpenVPN server for tunnel establishment. If Autologin is disabled, the following commands must be used to establish the tunnel:

- **interfaces openvpn vtunx remote-configuration tunnel-username** *username*
- **interfaces openvpn vtunx remote-configuration tunnel-password** *password*

To configure V2 to establish an OpenVPN tunnel to an OpenVPN server (with Autologin disabled) using OpenVPN Access Server as shown in the previous figure, perform the following steps in configuration mode.

TABLE 11 V2: client-side connection to OpenVPN access server (Autologin disabled)

Step	Command
Create the vtun0 configuration node.	<pre>vyatta@V2# set interfaces openvpn vtun0</pre>
Specify the OpenVPN Access Server IP address.	<pre>vyatta@V2# set interfaces openvpn vtun0 remote-configuration server 12.34.56.78</pre>
Specify the username to be authenticated by OpenVPN Access Server.	<pre>vyatta@V2# set interfaces openvpn vtun0 remote-configuration username abcd</pre>
Specify the password to be authenticated by OpenVPN Access Server.	<pre>vyatta@V2# set interfaces openvpn vtun0 remote-configuration password efgh</pre>
Specify the username required to establish the tunnel with the OpenVPN server.	<pre>vyatta@V2# set interfaces openvpn vtun0 remote-configuration tunnel-username tun-un3</pre>
Specify the password required to establish the tunnel with the OpenVPN server.	<pre>vyatta@V2# set interfaces openvpn vtun0 remote-configuration tunnel-password tun-pwdxyz</pre>
Commit the change.	<pre>vyatta@V2# commit</pre>
Show the configuration.	<pre>vyatta@V2# show interfaces openvpn vtun0 remote-configuration { password efgh server 12.34.56.78 tunnel-password tun-un3 tunnel-username tun-pwdxyz username abcd }</pre>

Advanced OpenVPN options

The previous section presented some basic OpenVPN scenarios and provided configuration steps for the Brocade vRouter. This section presents a number of more-advanced concepts and configuration options that may be useful to administrators of more complex environments.

- Transport protocol (Site-to-Site, Client, Server)

- Cryptographic algorithms (Site-to-Site, Client, Server)
- Split tunneling (Site-to-Site, Client, Server)
- Broadcast network (Site-to-Site, Client, Server)
- Multiple remote endpoints (Client only)
- Client-server topology (Server only)
- Client-specific settings (Server only)

Transport protocol (site-to-site, client, server)

By default, OpenVPN uses User Datagram Protocol (UDP) as the underlying transport protocol. Because UDP is connectionless, either side can initiate the VPN tunnel by sending packets to UDP port 1194 (default) on the other endpoint. Alternatively, OpenVPN can also use TCP as the transport. However, if TCP is used, one endpoint must take a passive role (that is, it listens to incoming TCP connections), and the other endpoint must take an active role (that is, it initiates the TCP connection to the TCP port on the passive endpoint).

Each protocol has different advantages in this context. For example, using TCP is much less prone to firewall or NAT problems in networks between the two endpoints. However, when packet losses occur, the TCP retransmissions at the tunnel level may interfere with retransmissions from the individual TCP flows inside the VPN tunnel; therefore, using UDP can result in better performance.

The following example shows and describes the related configuration options.

Configuration options related to protocol type

```
interfaces {
  openvpn if_name {
    protocol protocol
    local-host local_host_ip
    local-port local_port
    remote-port remote_port
  }
}
```

- **protocol**: This argument is **udp**, **tcp-active**, or **tcp-passive**. If **protocol** is not specified or if it is specified as **udp**, then UDP is used. On the other hand, if TCP is used, note the following requirements.
 - As previously discussed, when TCP is used, one endpoint must be active and the other one passive.
 - On the **tcp-active** endpoint, the **remote-host** option must be set so that it can initiate the TCP connection.
 - On the **tcp-passive** endpoint, if the **remote-host** option is set, then only the specified host can initiate the TCP connection to this endpoint.
 - If TCP is used in client-server mode, the client must be **tcp-active** and the server must be **tcp-passive**.
 - When TCP combines with TLS, the active and passive roles for TCP and TLS should match. In other words, the **tcp-active** endpoint should also be active for TLS (similarly for passive). Note that this match is not an OpenVPN restriction, but it is enforced to avoid confusion.
- **local-host**: This argument is an IP address on any of the network interfaces on this endpoint. If **local-host** is set, the OpenVPN process accepts only sessions coming in on the particular IP address. This acceptance applies to both UDP and TCP. If **local-host** is not set, OpenVPN accepts incoming sessions on any interface. This argument can be used for any of the following:
 - The server endpoint in client-server mode
 - Either endpoint when UDP is used in site-to-site mode
 - The **tcp-passive** endpoint when TCP is used in site-to-site mode
- **local-port**: This argument is the UDP or TCP port number on which OpenVPN accepts incoming sessions. If not set, OpenVPN accepts incoming sessions on the default port of 1194. This argument can be used for any of the following:
 - The server endpoint in client-server mode

- Either endpoint when UDP is used in site-to-site mode
- The **tcp-passive** endpoint when TCP is used in site-to-site mode
- **remote-port**: This argument is the UDP or TCP port number on the other endpoint to which OpenVPN initiates sessions. In other words, the other endpoint is accepting sessions on this port. If not set, OpenVPN initiates the session to the default port of 1194 on the remote endpoint. Note that, if set, the **remote-port** setting on one endpoint must match the **local-port** setting on the other, and conversely. This argument can be used for any of the following:
 - The client endpoint in client-server mode
 - Either endpoint when UDP is used in site-to-site mode
 - The **tcp-active** endpoint when TCP is used in site-to-site mode

Cryptographic algorithms (site-to-site, client, server)

As previously discussed, whichever security mechanism is used (preshared secret or TLS), after the VPN tunnel is established, the two endpoints apply an encryption algorithm and a hash algorithm on the tunneled VPN data to provide confidentiality and integrity. By default, the encryption and hash algorithms used by OpenVPN are Blowfish (with 128-bit keys) and SHA-1, respectively. This configuration should be reasonable in typical environments: the Blowfish algorithm performs well in software and has no known weakness, and SHA-1 is widely used and is part of the NIST Secure Hash Standard.

When a particular encryption or hash algorithm is required in an environment, the two configuration options shown in the following example can be used to specify the algorithm.

Configuration options related to security

```

interfaces {
  openvpn if_name {
    encryption algorithm
    hash algorithm
  }
}

```

- **encryption**: This argument is one of the following algorithms:
 - **des**: DES algorithm
 - **3des**: DES algorithm with triple encryption
 - **bf128**: Blowfish algorithm with 128-bit key
 - **bf256**: Blowfish algorithm with 256-bit key
 - **aes128**: AES algorithm with 128-bit key
 - **aes192**: AES algorithm with 192-bit key
 - **aes256**: AES algorithm with 256-bit key
- **hash**: This argument is one of the following hash algorithms:
 - **md5**: MD5 algorithm
 - **sha1**: SHA-1 algorithm
 - **sha256**: SHA-256 algorithm
 - **sha512**: SHA-512 algorithm

Split Tunneling (site-to-site, client, server)

When the OpenVPN tunnel is established between the two endpoints, by default, only the VPN traffic is routed through the tunnel. Other traffic, such as packets going to other places on the Internet, is still routed using the normal default route, not through the VPN tunnel. This split tunneling occurs because two tunnels (are considered) to exist: the normal traffic route and the VPN tunnel.

On the one hand, split tunneling is very efficient because non-VPN traffic (for example, Internet traffic) travels through the normal route. In a remote access VPN setup, for example, split tunneling means that Internet traffic from a remote user travels to and from the user ISP directly without going to the VPN server, company network, firewall, and so on. On the other hand, bypassing these functions can be considered a security issue because, in such cases, the Internet traffic is not filtered or protected according to a company policy.

To disable split tunneling, use the configuration shown in the following example.

Configuration options related to split tunneling

```
interfaces {
  openvpn if_name {
    replace-default-route {
      local
    }
  }
}
```

- **replace-default-route**: This argument tells OpenVPN that the default route should be replaced by a route through the VPN tunnel, that is, split tunneling should be disabled. Note that, when set, this option has different effects depending on the OpenVPN mode in which the endpoint operates.
 - If the endpoint is in site-to-site mode or client mode, using **replace-default-route** replaces the default route on this endpoint with a route through VPN tunnel. In other words, it disables split tunneling on this endpoint.
 - If the endpoint is in server mode, using **replace-default-route** causes the clients connecting to this server to replace their default route. In other words, it disables split tunneling on the clients.
- **local**: This keyword under **replace-default-route** must be set if and only if the two tunnel endpoints are directly connected, i.e., on the same subnet.

Of course, because the OpenVPN tunnel interface is routable, static routes can be added, with or without split tunneling, to override the default behavior.

Broadcast network (site-to-site, client, server)

By default, an OpenVPN interface is configured as a “tun” device. A tun device is a virtual network interface that operates on Layer 3 (network layer) traffic, such as IP packets. There are cases in which the virtual interface needs to operate on Layer 2 (link layer) traffic. One example of this need is when subnets on each end of a tunnel must reside on the same subnet. In this case, the two subnets must be bridged across the tunnel. Bridging occurs on Layer 2. Another example is when a DHCP Relay resides on one side of a tunnel and the DHCP Server or DHCP clients reside on the other side. Clients must broadcast DHCP discovery messages and require a broadcast network to broadcast these messages. Because of this necessity, DHCP Relay requires that all interfaces to which it binds are broadcast interfaces.

A “tap” device is a virtual network interface that operates on Layer 2 (link layer) traffic and provides a broadcast network. A tap device is automatically configured by the system if the OpenVPN tunnel is to be used to bridge two subnets. If an OpenVPN tunnel is added to a bridge group then a tap device is implied and does not need to be configured explicitly. For cases that do not involve bridging, a tap device must be configured explicitly by using the **interfaces openvpn vtunx device-type tap** command.

Client and server configuration

To configure an OpenVPN client or server as a tap device, use the configuration shown in the following example.

Configuration options related to tap devices for client and server interfaces

```
interfaces {
  openvpn if_name {
    device-type
    tap
  }
}
```

```
}
}
```

- **device-type tap**: This argument tells OpenVPN that the tunnel is to be used as a tap device and operate on Layer 2 traffic. This configuration is required on both ends of the OpenVPN tunnel.

Site-to-site configuration

For site-to-site configurations, in addition to configuring the interface as tap device, you must also indicate the subnet mask for the local address that is specified. To configure an OpenVPN site-to-site interface as a tap device, use the configuration shown in the following example.

Configuration options related to tap devices for site-to-site interfaces

```
interfaces {
  openvpn if_name {
    device-type
      tap
    local-address ipv4 {
      subnet-mask mask
    }
  }
}
```

- **device-type tap**: This argument tells OpenVPN that the tunnel is to be used as a tap device and operate on Layer 2 traffic. This configuration is required on both ends of the OpenVPN tunnel.
- **local-address**: This argument is the IP address at the local end of the OpenVPN tunnel.
- **subnet-mask**: This argument is the subnet mask for **local-address** (for example, 255.255.255.0).

Multiple remote endpoints (client only)

In client-server mode, the **remote-host** argument must be specified on the client endpoints so that the clients can initiate the VPN sessions. In some environments, the administrator may want the clients to have a list of servers to provide some redundancy— if one of the servers fails, a client can try the next one. In the Brocade vRouter, this server list can be configured by specifying multiple **remote-host** entries.

To configure multiple endpoints on V2, perform the following steps in configuration mode.

TABLE 12 V2 OpenVPN multiple endpoints configuration

Step	Command
Create the vtun0 configuration node.	<code>vyatta@V2# set interfaces openvpn vtun0</code>
Enter configuration commands.	<code>...</code>
Specify the physical IP address of the first remote host.	<code>vyatta@V2# set interfaces openvpn vtun0 remote-host 12.34.56.78</code>
Specify the physical IP address of the second remote host.	<code>vyatta@V2# set interfaces openvpn vtun0 remote-host 12.34.56.79</code>
Specify the physical IP address of the third remote host.	<code>vyatta@V2# set interfaces openvpn vtun0 remote-host 12.34.56.80</code>

TABLE 12 V2 OpenVPN multiple endpoints configuration (continued)

Step	Command
Set the firewall rule for inbound traffic on the vtun0 interface.	<pre>vyatta@V2# set interfaces openvpn vtun0 firewall in name rules-in</pre>
Enter configuration commands.	<pre>...</pre>
Commit the change.	<pre>vyatta@V2# commit</pre>
Show the OpenVPN configuration.	<pre>vyatta@V2# show interfaces openvpn vtun0 ... remote-host 12.34.56.78 remote-host 12.34.56.79 remote-host 12.34.56.80 ...</pre>

When multiple entries are specified, a client starts from the beginning of the list and attempts to establish a VPN tunnel with the first remote host. If the first host does not work, the client tries the second one, and so on.

Note that multiple **remote-host** entries can also be specified in site-to-site mode. However, because the two endpoints are most likely fixed in this mode, such usage probably does not make sense in most cases.

Client-server topology (server only)

In client-server mode, two different client-server topologies can be configured by using the **topology** argument. The two different topologies are **subnet** and **point-to-point**, as shown in the following example.

Configuration options related to topology

```
interfaces {
    openvpn if_name {
        server {
            topology [subnet|point-to-point]
        }
    }
}
```

The **topology** argument primarily specifies how the tunnel interface is configured, how the addresses are allocated, and so on. At a high level, these topologies have the following implications.

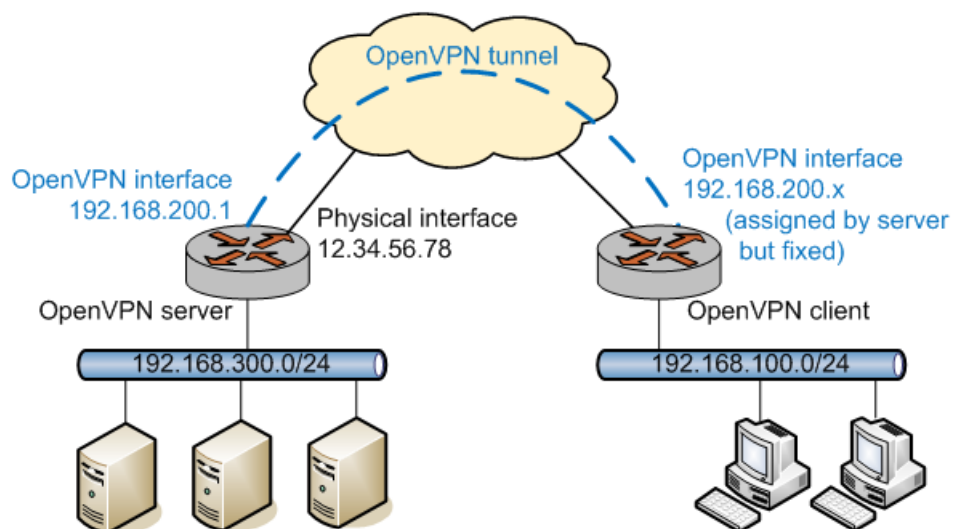
- **subnet**: This topology is compatible with OpenVPN clients on Windows hosts and is the default if **topology** is not used. Routing protocols that are configured to use a broadcast-style network are suited to this topology. However, this topology does not provide client isolation; that is, clients can reach one another.
- **point-to-point**: This topology is not compatible with Windows clients, and routing protocols using a broadcast-style network do not work with this topology. On the other hand, this topology provides client isolation.

Client-specific settings (server only)

In a typical remote access VPN setup, the clients are remote users—for example, users trying to access the company private network from home. Therefore, when a client establishes a VPN tunnel with the VPN server, it only needs to ensure that the client host itself can access the private network; so, it can use any tunnel IP address assigned by the server.

However, in some environments, the client-server mode is used to implement site-to-site functionality; that is, each client is in fact a site that establishes, in effect, a site-to-site tunnel with the server. The following figure illustrates this functionality.

FIGURE 7 Client-server mode



In such an environment, it may be useful to give a fixed IP address to each OpenVPN client. Furthermore, in such cases there may be a private network behind a client as well, and the OpenVPN server needs to determine that traffic destined to this private network should be routed to the particular client. Similarly, there may be networks behind the OpenVPN server that the client needs to access. In other words, these client-specific settings are tied to a particular client, and they can be configured by using the options that are shown in the following example and explained after the example.

Configuration options related to client-server

```

interfaces {
  openvpn if_name {
    server {
      client client_name {
        ip client_ip
        push-route ipv4net
        subnet client_subnet
      }
    }
  }
}

```

- **client:** This argument is the name for the client; this name corresponds to the common name specified in the certificate of the client. When a client initiates the VPN session, the server uses the name in the certificate to look up and apply client-specific settings (if any).
- **ip:** This argument is the fixed IP address that is assigned to the particular client.
- **push-route:** This argument is the network address of a network behind the OpenVPN server to which the client can route traffic. Multiple networks can be specified with multiple **push-route** configuration statements.

subnet: This argument is the private subnet behind the particular client, and the OpenVPN process routes traffic destined to this subnet to the client. Multiple networks can be specified with multiple **subnet** configuration statements.

Note that this setting only informs the OpenVPN server to which client the traffic for this subnet should be routed. However, before the OpenVPN server is in a position to make this decision, the traffic must be routed to the tunnel interface, so that it is processed by the OpenVPN server. For this reason, a static interface route must be added separately to direct traffic for this subnet to the tunnel interface.

In the preceding example, the V1 server can be configured with the client settings specific to the V2 client as follows (note that a static interface route is also needed for the subnet of the V2 client).

To configure this scenario, perform the following steps in configuration mode.

TABLE 13 V1 OpenVPN configuration: site-to-site with preshared secret

Step	Command
Create the vtun0 configuration node.	<code>vyatta@V1# set interfaces openvpn vtun0</code>
Enter configuration commands.	<code>...</code>
Create the server configuration node.	<code>vyatta@V1# set interfaces openvpn vtun0 server</code>
Enter configuration commands.	<code>...</code>
Create the V2 client configuration node.	<code>vyatta@V1# set interfaces openvpn vtun0 server client V2</code>
Specify the IP address of the client.	<code>vyatta@V1# set interfaces openvpn vtun0 server client V2 ip 192.168.200.100</code>
Specify the subnet at the server that the client can access.	<code>vyatta@V1# set interfaces openvpn vtun0 server client V2 push-route 192.168.300.0/24</code>
Set the subnet at the client.	<code>vyatta@V1# set interfaces openvpn vtun0 server client V2 subnet 192.168.100.0/24</code>
Enter configuration commands.	<code>...</code>
Commit the change.	<code>vyatta@V1# commit</code>
Show the OpenVPN configuration.	<code>vyatta@V1# show interfaces openvpn vtun0</code> <code>...</code> <code>server {</code> <code>...</code> <code>client V2 {</code> <code>ip 192.168.200.100</code> <code>push-route 192.168.300.0/24</code> <code>subnet 192.168.100.0/24</code> <code>}</code> <code>...</code> <code>}</code> <code>...</code>

To configure the static interface route to access the remote subnet through the OpenVPN tunnel, perform the following steps in configuration mode.

TABLE 14 V1 static interface route configuration

Step	Command
Create the static interface route to access the remote subnet through the OpenVPN tunnel.	<code>vyatta@V1# set protocols static interface-route 192.168.100.0/24 next-hop-interface vtun0</code>

TABLE 14 V1 static interface route configuration (continued)

Step	Command
Commit the change.	<pre>vyatta@V1# commit</pre>
Show the static routing configuration.	<pre>vyatta@V1# show protocols static interface-route 192.168.100.0/24 { next-hop-interface vtun0 { } }</pre>

Using unsupported OpenVPN options

OpenVPN has over two hundred options, not all of which are feasible to support in the Brocade vRouter. At the same time, the administrator of a particular environment might require OpenVPN options not supported by the Brocade vRouter configuration. For these cases, the Brocade vRouter provides the **openvpn-option** configuration attribute; this attribute allows any OpenVPN option to be specified, as shown in the following example.

The openvpn-option configuration attribute

```
interfaces {
  openvpn if_name{
    openvpn-option options
  }
}
```

The text of the **openvpn-option** attribute is passed directly (without any validation) to OpenVPN when OpenVPN is invoked, as if the text had been typed on the OpenVPN command line by the user. Therefore, multiple options can be entered together as shown in the following example.

To configure this example, perform the following steps in configuration mode.

TABLE 15 Entering multiple OpenVPN options using openvpn-option

Step	Command
Create the vtun0 configuration node.	<pre>vyatta@V1# set interfaces openvpn vtun0</pre>
Enter configuration commands.	<pre>...</pre>
Set the desired OpenVPN options.	<pre>vyatta@V1# set interfaces openvpn vtun0 openvpn- option "--verb 5 --secret /config/auth/secret 1"</pre>
Enter configuration commands.	<pre>...</pre>
Commit the change.	<pre>vyatta@V1# commit</pre>
Show the OpenVPN configuration.	<pre>vyatta@V1# show interfaces openvpn vtun0 ... openvpn-option "--verb 5 --secret /config/auth/ secret 1" ...</pre>

It is also possible to enter the commands separately as shown in the example that follows.

To configure this example, perform the following steps in configuration mode.

TABLE 16 Entering multiple OpenVPN options through multiple commands using `openvpn-option`

Step	Command
Create the <code>vtun0</code> configuration node.	<code>vyatta@V1# set interfaces openvpn vtun0</code>
Enter configuration commands.	<code>...</code>
Set another desired OpenVPN option.	<code>vyatta@V1# set interfaces openvpn vtun0 openvpn-option "--secret /config/auth/secret 1"</code>
Set a desired OpenVPN option.	<code>vyatta@V1# set interfaces openvpn vtun0 openvpn-option "--verb 5"</code>
Enter configuration commands.	<code>...</code>
Commit the change.	<code>vyatta@V1# commit</code>
Show the OpenVPN configuration.	<code>vyatta@V1# show interfaces openvpn vtun0</code> <code>...</code> <code>openvpn-option "--secret /config/auth/secret 1"</code> <code>openvpn-option "--verb 5"</code> <code>...</code>

No validation is done on this setting; therefore, when using it, you should make sure that the specified OpenVPN options and their values (if any) are valid. Furthermore, because many OpenVPN options conflict with one another, you should also ensure that the specified options do not conflict with one another or with any other OpenVPN options that are configured through the Brocade vRouter configuration. Finally, some OpenVPN options require coordination between the two endpoints (for example, the value must be 0 on one side and 1 on the other), and you must ensure such constraints are met.

Brocade SSL-VPN Client Bundler

• Overview	41
• Administration of the client bundle	42
• SSL-VPN client connection	48

Overview

Brocade Secure Sockets Layer-Virtual Private Network (SSL-VPN) Client Bundler enables the Brocade vRouter to generate image bundles that facilitate the setup of SSL-VPN client connections. Bundles include the up-to-date SSL-VPN client configuration that is required to connect to the server, including the required Transport Layer Security (TLS) certificate authority (CA) certificate that is used by the server.

Supported operating systems

Brocade SSL-VPN Client Bundler supports the following operating systems as SSL-VPN clients:

- Windows: Windows Vista, Windows 7, and Windows 8
- Mac OS X: Supported by OpenVPN frontends that support generic OpenVPN configuration files
- Linux: Network Manager applets and OpenVPN CLI

Client bundles

All generated SSL-VPN client bundles are user independent. The bundles hold only SSL-VPN server instance-specific information. A new SSL-VPN client bundle is generated automatically whenever the SSL-VPN server configuration is changed and requires a new SSL-VPN client configuration. No client certificates for authentication are used at this stage—the authentication token username and password are used for authentication against the local service user database for the Brocade vRouter or against a cooperating directory server (for example, Lightweight Directory Access Protocol (LDAP)).

Service-User web portal client bundle

SSL-VPN end users can obtain the generated bundles through the Service-User Web Portal of the Brocade vRouter after the bundles have been configured. See [Service-User web portal](#) on page 45.

For the Service-User Web Portal, the same credentials are required for authentication. The Brocade vRouter administrator can obtain the bundles directly from the Vyatta file-system and distribute the bundles to the end users individually.

Windows client bundle

The SSL-VPN client bundle for Windows operating system includes the SSL-VPN client software and the dedicated SSL-VPN connection.

The Brocade SSL-VPN client bundle is distributed as part of the installation wizard and includes the following:

- Latest version of the SSL-VPN client software (a virtual network device driver)
- SSL-VPN client configuration file
- Required TLS CA certificate

The Brocade SSL-VPN client software includes an easy-to-use GUI for the end user to maintain the SSL-VPN connection. The installation wizard is distributed as an executable (.exe) file.

Linux client bundle

The Linux SSL-VPN client bundle is a .zip archive that holds an OpenVPN configuration file and the required TLS CA certificate of the server. The TLS CA certificate is intentionally not compatible with the configuration because some certificates have already been released and are currently being used.

The Network Manager applets for Linux require that the TLS CA certificate is a file that is separate from the image.

OS X client bundle

The OS X SSL-VPN client bundle is a generic OpenVPN-formatted configuration file (.ovpn) with the TLS CA certificate included. This file is imported onto the OS X operating system of OpenVPN clients and allows the user to use the imported VPN connection profile.

Administration of the client bundle

This section covers the setup and administration of the SSL-VPN client bundle on the Brocade vRouter.

- [Generating the client bundle](#) on page 42
- [Authentication of the client bundle](#) on page 44
- [Service-User web portal](#) on page 45
- [Maintenance of SSL-VPN client bundles](#) on page 46
- [Deploying the SSL-VPN client bundle](#) on page 46

Generating the client bundle

The following example shows how configure the generation of the SSL-VPN client bundle after using the **interfaces openvpn** commands.

TABLE 17 Configuring the generation of the client bundle

Step	Command
Configure the OpenVPN tunnel interface for authentication. See Authentication of the client bundle on page 44.	<pre>vyatta@vyatta# set interfaces openvpn vtunX auth ...</pre>
Configure the path to the file that contains the TLS CA certificate, which is part of the client bundle.	<pre>vyatta@vyatta# set interfaces openvpn vtunX tls ca- cert-file filename_of_the_TLS_CA_certificate</pre>
Configure the SSL-VPN server address to use for the client bundle.	<pre>vyatta@vyatta# set interfaces openvpn vtunX local- host SSL-VPN_server_address</pre>
Configure the SSL-VPN server port to use for the client bundle.	<pre>vyatta@vyatta# set interfaces openvpn vtunX local- port SSL-VPN_server_port</pre>
Configure the client certificate on the SSL-VPN server: client bundles do not use TLS client certificates for authentication—they are not required on the SSL-VPN connection.	<pre>vyatta@vyatta# set interfaces openvpn vtunX client- cert-not-required</pre>
Set a description for the name of the SSL-VPN endpoint.	<pre>vyatta@vyatta# set interfaces openvpn vtunX description SSL-VPN_endpoint_name_for_end_user</pre>

The **client-cert-not-required** keyword must be set to allow SSL-VPN clients to connect without a TLS client certificate that is specific to an end user. Even if client certificates were created, they are not included in any SSL-VPN client bundles.

The description serves as the identifier for various objects. In non-OpenVPN interfaces, the description serves as the network interface alias and is shown in the administration web interface that appears in the dashboard overview.

In the context of the SSL-VPN client bundle, the description is also used in the following cases:

- The Service-User Web Portal and is presented to the end user as the name of the SSL-VPN instance or endpoint
- Name of the SSL-VPN client as the profile name that is inside the Brocade SSL-VPN client
- Tunnelblick
- The Linux Network Manager applets
- File names of client bundles

NOTE

Tip: use an end-user friendly name to distinguish between potential different SSL-VPN endpoints or Brocade vRouter instances, for example: ACME HQ, ACME EMEA, and so on. Setting the description to ACME HQ results in client bundle files, which the user has to download, with names like ACME HQ v1.exe, ACME HQ v1.zip, and so forth.

In addition to the mandatory settings, settings that are shown in the following example influence the configuration of the client bundle.

The following example shows how to configure additional settings for the client bundle.

TABLE 18 Configuring the generation of the client bundle

Step	Command
Configure the system for the hash algorithm.	<pre>vyatta@vyatta# set interfaces openvpn vtunX hash hash_algorithm</pre>
Configure the system for an encryption method.	<pre>vyatta@vyatta# set interfaces openvpn vtunX encryption encryption_method</pre>
Configure the system for a transport protocol.	<pre>vyatta@vyatta# set interfaces openvpn vtunX protocol transport_protocol_to_use</pre>

When optional settings or mandatory settings are changed, a new version of the SSL-VPN client bundles is generated during the next configuration commit.

To enable client bundle configuration, you must specify for which operating systems the bundles needs to be set.

By default, no client bundle is generated if no operating system is explicitly configured.

The following example shows how to create on commit all three operating systems client bundles.

TABLE 19 Configuring the operating systems

Step	Command
Configure OS X as the target operating system for which to create a client-bundle.	<pre>vyatta@vyatta# set interfaces openvpn vtunX client-bundle osx</pre>
Generate the client bundle, which consists of a standard OpenVPN-formatted configuration file.	<pre>vyatta@vyatta# set interfaces openvpn vtunX client-bundle generic</pre>
Configure Linux as the target operating system for which to create a client-bundle.	<pre>vyatta@vyatta# set interfaces openvpn vtunX client-bundle linux</pre>

Authentication of the client bundle

Authentication of SSL-VPN client bundle is accomplished through a username and password together as the authentication token without TLS client certificates. The authentication can be done against a set of Brocade vRouter-maintained local service users or against central identity management systems like cooperating directory servers (for example, LDAP).

Management of local service users and authentication against a central identity management system is covered in Service User Management.

The SSL-VPN client authentication configuration only requires to reference to authentication profiles of central identify management systems or by referring local service users or groups of local service users.

The SSL-VPN client authentication configuration references the following:

- Authentication profiles of central identity management systems
- Local service users
- Groups of local service users

Any change to the service-user authentication, such as adding or removing a new local service user, or changing or adding an LDAP authentication profile, does not require a change to existing client bundles.

Because client bundles are independent of users, no such change requires a change to existing client setups. A change to service-user authentication does not require a restart of the SSL-VPN server, nor does it terminate the existing client connection.

Authentication methods can be combined for the same SSL-VPN instance to provide authentication against multiple LDAP servers and local service users. When one of these authentication resources grants access, the authorization of the SSL-VPN connection is granted and access to that SSL-VPN instance is permitted.

SSL-VPN access to a local service user

By default, no local service user is granted access to any SSL-VPN endpoint. Fine grained-access control can be granted by explicitly referring to which service user or group of service users is granted access.

The following example shows how to create the alice and bob local service users and grant access for them to the vtunX OpenVPN interface.

TABLE 20 Granting the alice and bob service-users access to the vtunx OpenVPN interface

Step	Command
Configure the alice user with a password.	<pre>vyatta@vyatta# set resources service-users local user alice auth plaintext-password foo</pre>
Configure the bob user with a password.	<pre>vyatta@vyatta# set resources service-users local user bob auth plaintext-password bar</pre>
Configure an interface for alice.	<pre>vyatta@vyatta# set interfaces openvpn vtunX auth local user alice</pre>
Configure an interface for bob.	<pre>vyatta@vyatta# set interfaces openvpn vtunX auth local user bob</pre>
Commit the configuration.	<pre>vyatta@vyatta# commit</pre>

This configuration allows the alice and bob service users to authenticate themselves by using their usernames and passwords when connecting with the SSL-VPN client bundles.

To refuse bob any further access to the vtunX OpenVPN interface, you must delete the service-user reference in the OpenVPN vtunX interface configuration:

```
vyatta@vyatta# delete interfaces openvpn vtunX auth local user bob
vyatta@vyatta# commit
```

NOTE

The preceding configuration change does not terminate the existing SSL-VPN session of user bob on vtunX, nor does it interrupt any other existing SSL-VPN client connection.

To grant access to the vtunX OpenVPN interface a group of multiple service users SSL-VPN, enter the following commands:

```
vyatta@vyatta# set resources service-users local group it-dep alice
vyatta@vyatta# set resources service-users local group it-dep bob
vyatta@vyatta# set interfaces openvpn vtunX auth local group it-dep
vyatta@vyatta# commit
```

The preceding configuration change assigns service users alice and bob to the it-dep group. All users of that group are granted access to the vtunX OpenVPN interface.

NOTE

A change to the membership of an individual user has immediate impact after the change is committed. An existing SSL-VPN connection for a service user who is dropped from a group that has been granted access is not terminated. The change just rejects any further authentication attempts to the vtunX OpenVPN service instance.

Granting SSL-VPN access to an LDAP the service user

LDAP authentication of an SSL-VPN connection requires a service-user LDAP authentication profile, which is configured in the following file:

resources service-users ldap *profilename*

Details on how to set up a service LDAP authentication profile are covered in Service User Management.

To enable SSL-VPN authentication against an LDAP service-user authentication profile with a profile name of example.com, the profile name just has to be referred to in the **openvpn vtunX auth** command for the interfaces, as shown here:

```
vyatta@vyatta# set resources service-users ldap example.com ...
vyatta@vyatta# set interfaces openvpn vtunX auth ldap example.com
vyatta@vyatta# commit
```

The preceding configuration change allows access to SSL-VPN for all users who can authenticate themselves with their LDAP credentials against the example.com LDAP profile.

Service-User web portal

Use the Service-User Web Portal to allow end users to obtain by themselves the SSL-VPN client bundles. The portal is available by default from the following public-interface address of the Brocade vRouter:

<https://vRouter-public-IP/service>

The Service-User Web Portal is disabled by default and shows a message indicating that the service is not available.

To enable the Service-User Web Portal, enter the following commands:

```
vyatta@vyatta# set services https service-user
vyatta@vyatta# commit
```

All service users that are configured in the resource services-users file can authenticate themselves with their own credentials and passwords.

If all service users are granted access to individual SSL-VPN instances on the Brocade vRouter, they are provided download links to SSL-VPN client bundles for each configured operating system.

Maintenance of SSL-VPN client bundles

This section covers the maintenance of SSL-VPN client bundles to provide reliable and secure SSL-VPN service to end users.

Changes to the following configuration options in **interfaces openvpn vtunX** cause a regeneration of all configured bundles:

- hash
- encryption
- tls ca-cert-file
- local-host
- local-port
- protocol
- description

This regeneration occurs to provide SSL-VPN client configuration that is always up to date. We recommend that an end user obtain the latest SSL-VPN client bundle to get SSL-VPN configuration changes.

The file name of each client bundle includes a suffix to identify the latest version of the client in this form: filename-*versionnumber*.exe. For example: ACME HQ-v2.exe.

NOTE

Only the most recent version of a bundle is kept on the Brocade vRouter persistent volume.

An SSL-VPN end user must manually obtain a new bundle. A bundle that is already installed or deployed is not automatically updated with the latest configuration.

SSL-VPN client software updates

The Linux client and the OS X client bundles contain only configuration files and TLS CA certificates, not actual code and binary files.

The SSL-VPN Client software in the Windows bundle might need to receive updates that are made available as regular Brocade vRouter image releases. When a Brocade vRouter release contains a new version of SSL-VPN Client, then all Windows bundles are regenerated with the latest version of the SSL-VPN Client software during the update process.

We recommend that you review the Brocade vRouter release notes for each release for direction when the SSL-VPN client update includes critical fixes. For these fixes, advise your SSL-VPN end users to get the latest Windows OS client bundle. The installation wizard guides the users through the update process.

To keep the bundle versions for the operating systems synchronized, all bundles are regenerated when one platform requires regeneration. For example, if a new SSL-VPN client for the Windows OS becomes available, existing OS X and Linux bundles are also regenerated to have the same bundle version as the Windows OS version.

Deploying the SSL-VPN client bundle

To deploy an SSL-VPN client bundle to SSL-VPN end users, they can be obtained by the following methods:

- By the end users through the Service-User Web Portal
- By the Brocade vRouter administrator through the Brocade vRouter file-system

The set of files for the generated SSL-VPN client bundle on the Brocade vRouter is located in the directory: `/config/auth/vpn/ssl-vpn/vtunX/`.

The files are located in the following directories by platform (operating system):

- Windows operating system: `/config/auth/vpn/ssl-vpn/client-bundle/vtunX/windows/$description-v$version.exe`
- Linux: `/config/auth/vpn/ssl-vpn/vtunX/client-bundle/linux/$description-v$version.zip`
- OS X: `/config/auth/vpn/ssl-vpn/vtunX/client-bundle/osx/$description-v$version.ovpn`
- Generic: `/config/auth/vpn/ssl-vpn/vtunX/client-bundle/generic/$description-v$version.ovpn`

NOTE

Those client-bundle directories are automatically generated and removed. Do not put any files or backups of bundles in these locations because the contents get deleted.

Brocade SSL-VPN client for Windows OS

The Brocade SSL-VPN Client for Windows operating system requires administrator privileges for installation because a device driver for a virtual network must be installed and a virtual network interface must be created.

An installation wizard is generated on demand with the latest SSL-VPN client configuration that is running on the Brocade vRouter. Because the wizard is a Windows OS executable file, various Windows OS or browser security measures display messages to warn the end user about potential known malware risks.

Some Web browsers warn that downloaded Windows OS executable files are "not commonly downloaded and could be dangerous." Those browsers often obtain the size and checksum of a file and send that information to the servers of the browser vendors on the Internet to get information about potential known malware. Because the installation wizard is generated on demand and is unique and not known to any of the Web browser vendors, their systems warn the user about the SSL-VPN client bundle for Windows OS as previously indicated.

The executable file for the installation wizard is not signed by the signing key for the publisher code because the wizard is generated on demand on the Brocade vRouter. This generation causes a warning message, which indicates that the publisher is unknown and not trusted, in certain browsers when the end user is running the installation wizard on a Windows client machine.

FIGURE 8 Security warning message



The virtual network driver that is included is signed by the official Brocade Code Signing.

SSL-VPN client connection

This section is intended for the Brocade vRouter administrator to which to refer the end user who wants to obtain and establish a connection through SSL-VPN.

Obtaining the SSL-VPN client bundle

Consult your IT administrator to get one of the following:

- A URL to the Service-Users Web Portal of the Brocade vRouter SSL-VPN endpoint

If you receive a URL to the Service-Users Web Portal, log in with credentials that are provided or from your cooperating account. Enter your credentials only when the URL is given to you by your IT administrator.

- A set of files that contains the required SSL-VPN client bundle

If you receive the SSL-VPN client bundle as a set of files, continue with [Installing the SSL-VPN client bundle](#) on page 49. Make sure to receive files only from your IT administrator and no other source. If you are in doubt, verify with your administrator that you have the correct files.

FIGURE 9 Service-Users web portal login page



Service-User Web Portal

Please enter username and password to login.

Username:

Password:

LOGIN

[Contact Us](#) ©2014 Brocade Communications Systems, Inc. All Rights Reserved.

The URL to the Service-User Web Portal of the Brocade vRouter might look like this:

`https://cooperative_address/service`

After you are logged in to the portal, the **SSL-VPN** section of the **Service-Users Web Portal** lists all granted SSL-VPN endpoints for your account.

FIGURE 10 Service-Users web portal SSL-VPN section

Logged in as: alice | log out

VYATTA
A Brocade® Company

Service-User Web Portal

Services

- SSL-VPN

SSL-VPN

Available SSL-VPN Configuration / Client Bundle(s) Standard OpenVPN formatted config file(s):

Name	Platform / Description	Download
AT&T FIFA	Generic: Standard OpenVPN formatted config file (for OS X, Linux Servers,) Linux Desktop: Configuration Bundle for Network Manager Windows: Brocade SSL-VPN Client Bundle	generic linux windows

Contact Us ©2014 Brocade Communications Systems, Inc. All Rights Reserved

Select an available SSL-VPN endpoint or location to which you want to connect and the correct SSL-VPN client bundle for the operating system on your computer.

Installing the SSL-VPN client bundle

Read the following section that applies to the operating system on which you want to use the SSL-VPN client bundle: Windows, OS X, or Linux.

Windows OS: Brocade SSL-VPN client

The SSL-VPN Client Bundle for Windows gets downloaded as an executable file. The bundle consists of the Brocade SSL-VPN Client software and the SSL-VPN client configuration required to connect to the SSL-VPN endpoint. The downloaded executables starts an installation wizard that guides you through the installation of the Brocade SSL-VPN client software. The installation wizard also handles the actual configuration for the Brocade SSL-VPN Client for your target SSL-VPN endpoint.

NOTE

The Brocade SSL-VPN Client requires administration privileges to be installed. The installation does not start without these privileges.

Consult your IT administrator if you do not have administration privileges and ask for further guidance.

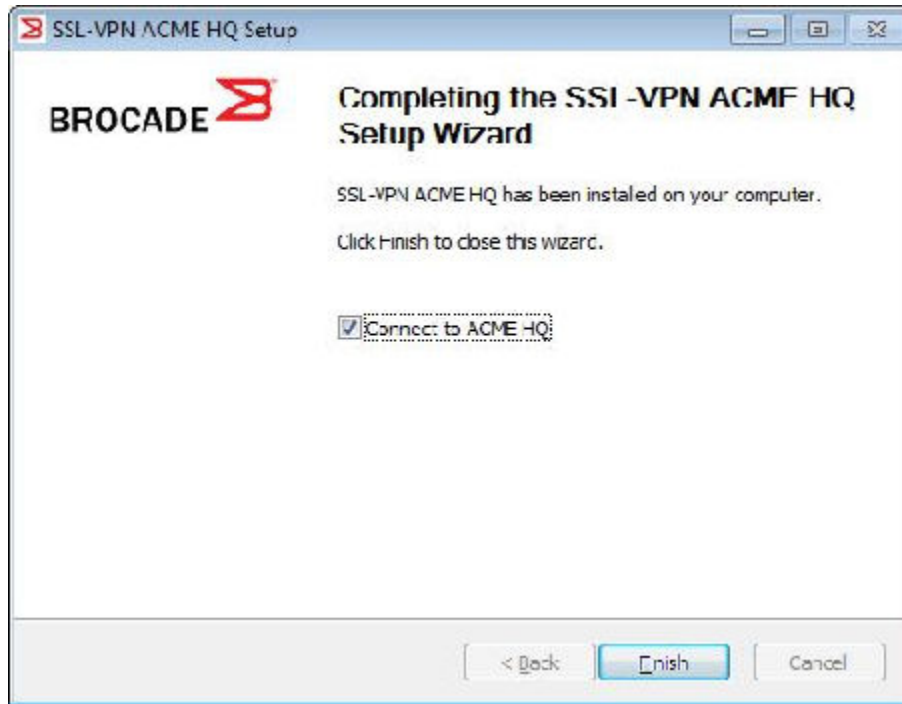
Follow the instructions in the wizard and finish the installation and setup of the Brocade SSL-VPN client.

FIGURE 11 SSL-VPN Setup Wizard dialog



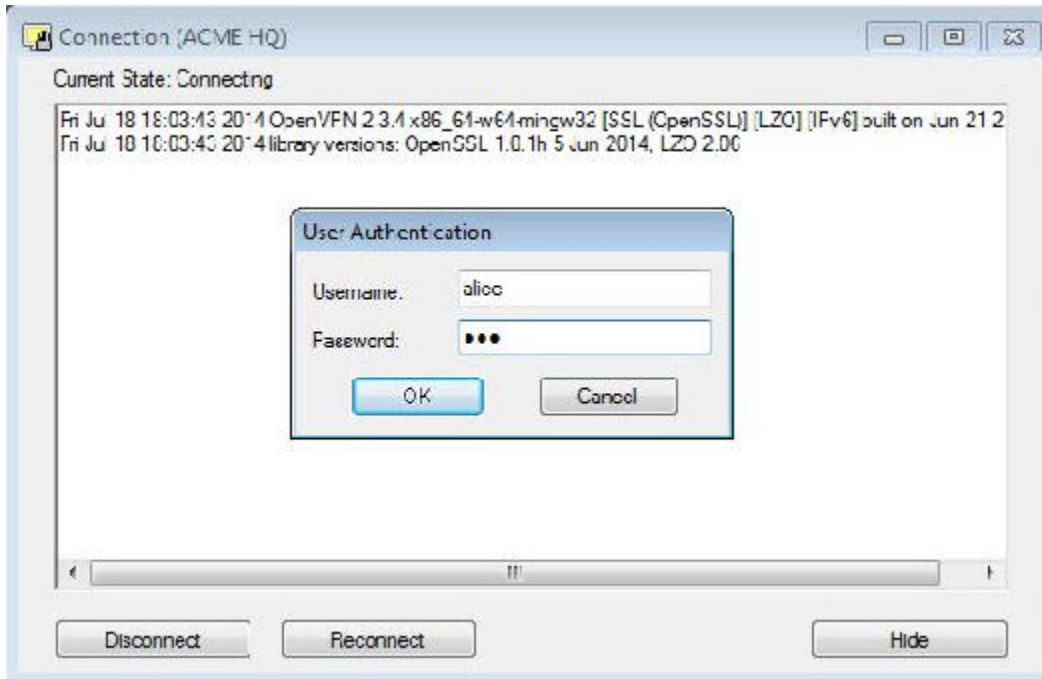
After installation, you can either select in the installation wizard to connect directly to the SSL-VPN or uncheck the **Connect to** box and close the installation wizard by clicking **Finish**.

FIGURE 12 Completing the SSL-VPN Setup Wizard dialog



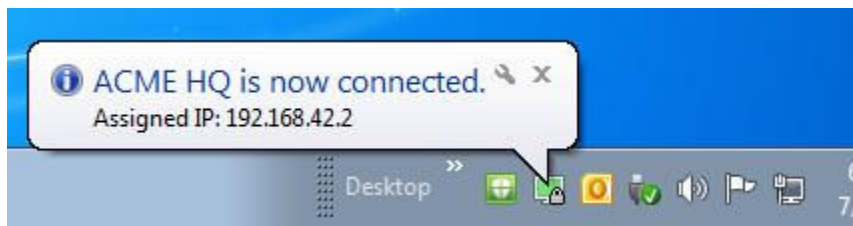
If the **Connect to** box is checked, the Brocade SSL-VPN client starts automatically and prompts you for a username and a password.

FIGURE 13 Service-Users web portal login page



The username and password are either your cooperative credentials are provided to you by your IT administrator.

FIGURE 14 Connection confirmation pop-up message



After the Brocade SSL-VPN client is connected, it can be controlled through the tray menu by right-clicking on the tray icon.

FIGURE 15 Brocade SSL-VPN client tray menu



To quit the Brocade SSL-VPN client, use the tray menu and select **Exit**. After confirming the exit, the SSL-VPN connection terminates.

To connect again to the SSL-VPN endpoint or to start the Brocade SSL-VPN client after rebooting, either use the **Connect SSL-VPN** to shortcut on the desktop or navigate the following path in the Windows Start menu:

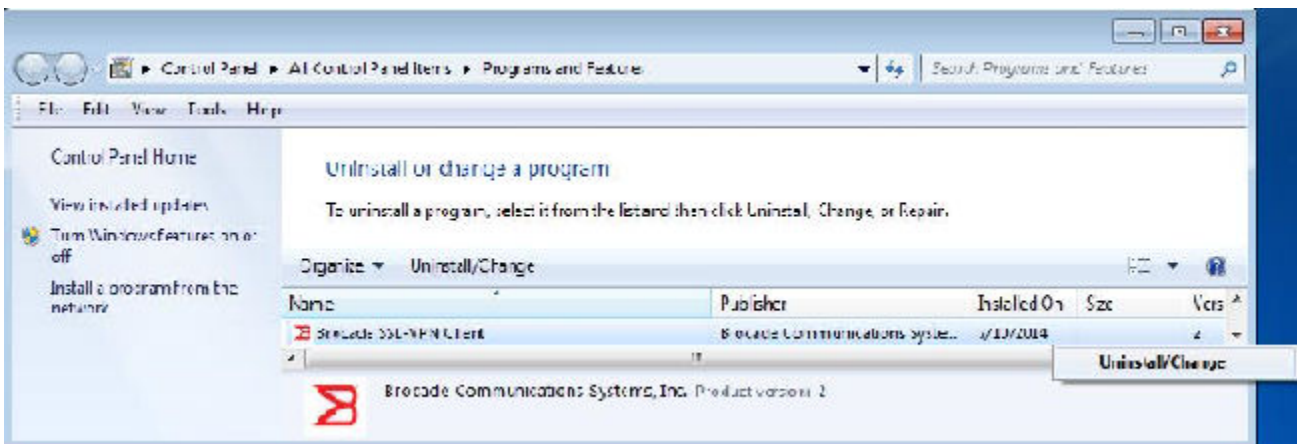
Start > All Programs > Brocade SSL-VPN Client

NOTE

The installation wizard installs the Brocade SSL-VPN client persistently on your computer. So, the SSL-VPN client can be used across reboots and needs to be downloaded only once. Your IT administrator might ask you to obtain the latest version of the Brocade SSL-VPN client when changes are made to the SSL-VPN network configuration or maintenance updates are made to the Brocade SSL-VPN client software.

To uninstall the Brocade SSL-VPN client, go to the Windows Control Panel and select **Uninstall/Change**.

FIGURE 16 SSL-VPN client uninstallation page



Linux platform

For Linux desktops, you must create a new VPN connection profile in Network Manager and import the provided SSL-VPN bundle configuration. See [Network manager \(Linux desktops\)](#) on page 54.

For all other Linux variants, see [OpenVPN CLI](#) on page 58.

Regardless of which version of the Linux desktop you are running, the SSL-VPN client bundle must be unpacked. The client bundle arrives as a .zip archive that, after extraction, holds the following two files:

- OpenVPN configuration (file suffix: .ovpn)
- TLS CA certificate (file suffix: .crt)

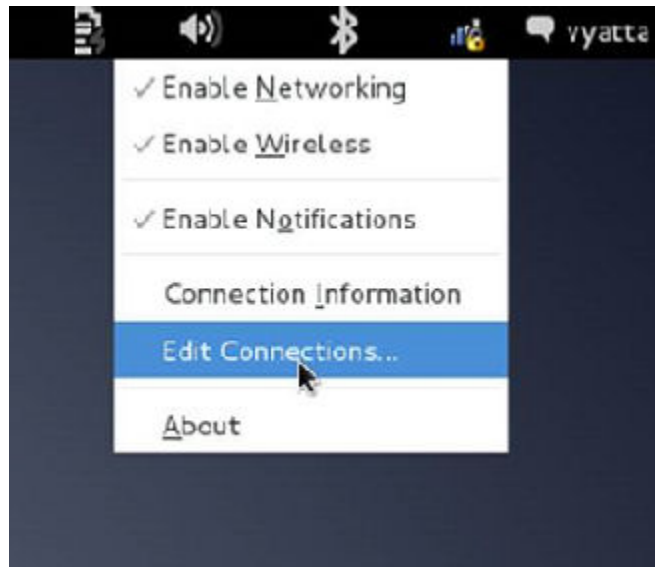
Network manager (Linux desktops)

This section applies to Linux desktops, such as Gnome, KDE, and so on, which commonly use Network Manager applets to manage network connections and various types of VPN connections.

To make a VPN connection and import the configuration file, follow these steps:

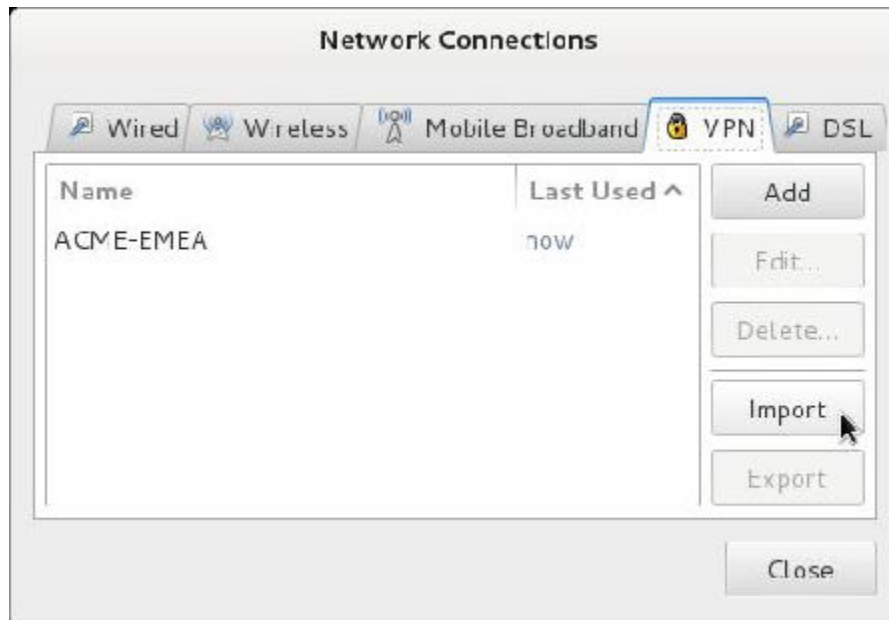
1. Enter the tray menu of the Network Manager applet and select **Edit Connections**.

FIGURE 17 Editing connections... selection



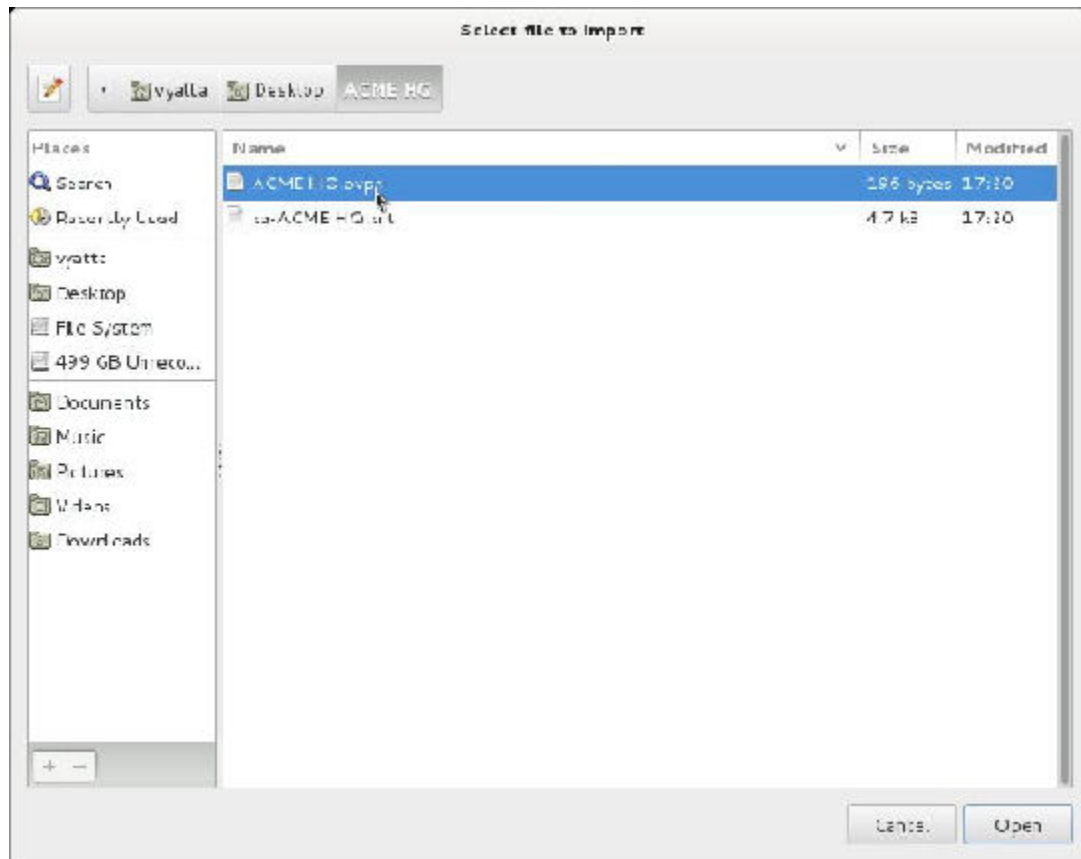
2. Select the **VPN** tab in the **Network Connections** setup dialog box.
3. Select **Import**. In the file dialog, select the location of the unpacked Zip archive.

FIGURE 18 Network connections dialog box



4. Select the OpenVPN configuration file (.ovpn) as the file to import.

FIGURE 19 Selecting the configuration file



5. In the configuration dialog box after **User name**, enter your cooperating username for the SSL-VPN connection that is provided by your IT administrator or set your cooperating username.

The cooperating username indicates to users that they use their known cooperating credentials. In this example, the username is alice.

FIGURE 20 Entering login information

Editing ACME HQ

Connector name: ACME HQ

Connect automatically

VPN IPv4 Settings

General

Gateway: vpn-hq.acme.com

Authentication

Type: Password

User name: alice

Password: Saved

CA Certificate: ca-ACME HQ.crt

Show passwords

Advanced...

Available to all users

Cancel Save

6. Verify that the CA certificate is set with the TLS CA certificate file (.crt) from the extracted .zip archive. All further settings were previously set by the imported profile.
7. Leave the **Network Connection** setup dialog box by saving the configuration.
8. Enter the tray menu of the Network Manager applet again and select **VPN Connections** and the recently imported SSL-VPN profile, which has the name of the SSL-VPN client bundle.

FIGURE 21 Selecting VPN connections and the SSL-VPN profile

**NOTE**

If the profile fails, verify that your system has the Network Manager OpenVPN plugin installed. Depending on your Linux desktop, you might need the following packages:

- network-manager-openvpn-gnome or NetworkManager-openvpn-gnome
- network-manager-openvpn-kde or NetworkManager-openvpn-kde4
- network-manager-openvpn

OpenVPN CLI

The SSL-VPN client bundle can also be used with the OpenVPN command line interface, which requires that you install the `openvpn` package.

Enter the unpackaged directory for the SSL-VPN client bundle and run the following command:

```
$ sudo openvpn SSL-VPN_client_bundle_name.ovpn
```

NOTE

Using this command requires root privileges.

This OpenVPN command-line prompt requests the username and password for authentication. Use either the IT administrator-provided credentials or your cooperating credentials.

OS X platform

For OS X, the client bundle consists of a generic OpenVPN formatted configuration file for OpenVPN OS X clients. To make use of the SSL-VPN client bundle for OS X, you must first install an OpenVPN client application for OS X. There are various OS X OpenVPN clients available. All of those are compatible with the provided SSL-VPN client bundle configuration for OS X.

Configuring OpenVPN LDAP Authentication

- [Configuring LDAP authentication.....59](#)
- [Configuring LDAP authentication without client certificates..... 59](#)

Configuring LDAP authentication

To configure OpenVPN LDAP authentication, perform the following steps:

1. Configure service-user authentication through LDAP, as described in the “Service-User Management” chapter of *Brocade 5600 vRouter Basic System Reference Guide*.
2. Link an OpenVPN instance or interface to the LDAP service-user profile.

```
vyatta@vyatta# set interfaces openvpn vtunX auth ldap ldap-profile-name
```

Configuring LDAP authentication without client certificates

To perform OpenVPN LDAP authentication without client certificates, use the following command:

```
vyatta@vyatta# set interfaces openvpn vtunX client-cert-not-required
```


OpenVPN Commands

• generate openvpn key <filename>.....	63
• interfaces openvpn <vtunx>.....	64
• interfaces openvpn <vtunx> description <description>.....	65
• interfaces openvpn <vtunx> device-type tap.....	66
• interfaces openvpn <vtunx> disable.....	67
• interfaces openvpn <vtunx> encryption <algorithm>.....	68
• interfaces openvpn <vtunx> firewall <action>.....	69
• interfaces openvpn <vtunx> hash <algorithm>.....	70
• interfaces openvpn <vtunx> ipv6 address.....	71
• interfaces openvpn <vtunx> ipv6 disable-forwarding.....	73
• interfaces openvpn <vtunx> ipv6 dup-addr-detect-transmits <number>.....	74
• interfaces openvpn <vtunx> ipv6 router-advert.....	75
• interfaces openvpn <vtunx> local-address <ipv4>.....	79
• interfaces openvpn <vtunx> local-host <ipv4>.....	80
• interfaces openvpn <vtunx> local-port <port>.....	81
• interfaces openvpn <vtunx> mode <mode>.....	82
• interfaces openvpn <vtunx> openvpn-option <options>.....	83
• interfaces openvpn <vtunx> protocol <protocol>.....	84
• interfaces openvpn <vtunx> remote-address <ipv4>.....	85
• interfaces openvpn <vtunx> remote-configuration password <password>.....	86
• interfaces openvpn <vtunx> remote-configuration server <address>.....	87
• interfaces openvpn <vtunx> remote-configuration tunnel-password <password>.....	88
• interfaces openvpn <vtunx> remote-configuration tunnel-username <username>.....	89
• interfaces openvpn <vtunx> remote-configuration username <username>.....	90
• interfaces openvpn <vtunx> remote-host <hostname>.....	91
• interfaces openvpn <vtunx> remote-port <port>.....	92
• interfaces openvpn <vtunx> replace-default-route.....	93
• interfaces openvpn <vtunx> server.....	94
• interfaces openvpn <vtunx> server client <client-name>.....	95
• interfaces openvpn <vtunx> server client <client-name> disable.....	96
• interfaces openvpn <vtunx> server client <client-name> ip <ipv4>.....	98
• interfaces openvpn <vtunx> server client <client-name> push-route <ipv4net>.....	99
• interfaces openvpn <vtunx> server client <client-name> subnet <ipv4net>.....	101
• interfaces openvpn <vtunx> server domain-name <domain-name>.....	102
• interfaces openvpn <vtunx> server max-connections <number>.....	103
• interfaces openvpn <vtunx> server name-server <ipv4>.....	104
• interfaces openvpn <vtunx> server push-route <ipv4net>.....	105
• interfaces openvpn <vtunx> server subnet <ipv4net>.....	106
• interfaces openvpn <vtunx> server topology <topology>.....	107
• interfaces openvpn <vtunx> shared-secret-key-file <filename>.....	108
• interfaces openvpn <vtunx> tls.....	109
• interfaces openvpn <vtunx> tls ca-cert-file <filename>.....	110
• interfaces openvpn <vtunx> tls cert-file <filename>.....	111
• interfaces openvpn <vtunx> tls crl-file <filename>.....	112
• interfaces openvpn <vtunx> tls dh-file <filename>.....	113
• interfaces openvpn <vtunx> tls key-file <filename>.....	114
• interfaces openvpn <vtunx> tls role <role>.....	115
• monitor interfaces openvpn <vtunx> traffic.....	116
• reset openvpn interface <vtunx>.....	117

- reset openvpn interface <vtunx> client <client-name>.....118
- show interfaces openvpn.....119
- show interfaces openvpn <interface>.....120
- show interfaces openvpn <interface> brief.....121
- show interfaces openvpn detail.....122
- show openvpn client status.....123
- show openvpn server status.....124
- show openvpn site-to-site status.....125
- Related commands.....125

generate openvpn key <filename>

Generates a shared secret key that is contained in a file with the specified file name.

Syntax

```
generate openvpn key filename
```

Parameters

filename

A name for the file that contains the shared key.

Modes

Operational mode

Usage Guidelines

Use this command to generate a shared secret key that is contained in a file with the specified file name. The key is required when the OpenVPN preshared secret mechanism is used. This command is available only to users with administrative privileges.

interfaces openvpn <vtunx>

Defines an OpenVPN interface.

Syntax

set interfaces openvpn *vtunx*

delete interfaces openvpn *vtunx*

show interfaces openvpn *vtunx*

Parameters

vtunx

Multi-node. The identifier for an OpenVPN interface. This identifier is vtun0 through **vtunx**, where *x* is a non-negative integer.

You can define more than one OpenVPN interface by creating multiple **interfaces openvpn** configuration nodes.

Modes

Configuration mode

Configuration Statement

```
interfaces {
  openvpn vtunx {
  }
}
```

Usage Guidelines

Use this command to define an OpenVPN interface.

Use the **set** form of this command to configure an interface.

Use the **delete** form of this command to remove an existing configuration for an interface.

Use the **show** form of this command to view the configuration for an interface.

interfaces openvpn <vtunx> description <description>

Provides a description for an OpenVPN interface.

Syntax

set interfaces openvpn *vtunx* description *description*

delete interfaces openvpn *vtunx* description

show interfaces openvpn *vtunx* description

Parameters

vtunx

The identifier for an OpenVPN interface. This may be **vtun0** to **vtunx**, where *x* is a non-negative integer.

description

A brief description for the interface. If the description contains spaces, it must be enclosed in quotation marks.

Modes

Configuration mode

Configuration Statement

```
interfaces {
  openvpn vtunx {
    description description
  }
}
```

Usage Guidelines

Use this command to provide a description for an OpenVPN interface.

NOTE

Committing configuration changes to this configuration node does not result in the OpenVPN process being restarted.

Use the **set** form of this command to provide a description for an interface.

Use the **delete** form of this command to remove the description for an interface.

Use the **show** form of this command to view the description for an interface.

interfaces openvpn <vtunx> device-type tap

Configures an OpenVPN interface as a tap device.

Syntax

```
set interfaces openvpn vtunx device-type tap
delete interfaces openvpn vtunx device-type tap
show interfaces openvpn vtunx device-type
```

Command Default

The OpenVPN interface is configured as a tun device.

Parameters

vtunx

The identifier for the OpenVPN interface. This may be **vtun0** to **vtunx**, where *x* is a non-negative integer.

Modes

Configuration mode

Configuration Statement

```
interfaces {
  openvpn vtunx {
    device-type {
      tap
    }
  }
}
```

Usage Guidelines

Use this command to configure an OpenVPN interface as a tap device.

By default, an OpenVPN interface is configured as a tun device. A tun device is a virtual network interface that operates on Layer 3 (network layer) traffic, such as IP packets. A tap device is also a virtual network interface, but it operates on Layer 2 (link layer) traffic. A tap device is used in instances when two ends of an OpenVPN tunnel must be bridged or require a broadcast interface. A sample instance is DHCP Relay.

NOTE

Each end of an OpenVPN tunnel must have the same **device-type** configuration.

Use the **set** form of this command to configure an interface as a tap device.

Use the **delete** form of this command to return an interface to its default behavior, that is, the interface is configured as a tun device.

Use the **show** form of this command to view the **device-type** configuration.

interfaces openvpn <vtunx> disable

Disables an OpenVPN interface without discarding the configuration.

Syntax

set interfaces openvpn *vtunx* disable

delete interfaces openvpn *vtunx* disable

show interfaces openvpn *vtunx*

Command Default

The OpenVPN interface configuration is enabled.

Parameters

vtunx

The identifier for the OpenVPN interface. This may be **vtun0** to **vtunx**, where *x* is a non-negative integer.

Modes

Configuration mode

Configuration Statement

```
interfaces {
  openvpn vtunx {
    disable
  }
}
```

Usage Guidelines

Use this command to disable an OpenVPN interface without discarding configuration. The interface can then be re-enabled at a later time without the need to redefine the configuration.

Use the **set** form of this command to disable an interface.

Use the **delete** form of this command to enable an interface.

Use the **show** form of this command to view the configuration of an interface.

interfaces openvpn <vtunx> encryption <algorithm>

Specifies the encryption algorithm to be used within an OpenVPN tunnel.

Syntax

set interfaces openvpn *vtunx* encryption *algorithm*

delete interfaces openvpn *vtunx* encryption

show interfaces openvpn *vtunx* encryption

Command Default

The encryption algorithm is the Blowfish algorithm with 128-bit key.

Parameters

vtunx

The identifier for the OpenVPN interface. This may be **vtun0** to **vtunx**, where *x* is a non-negative integer.

algorithm

The encryption algorithm that is used within the OpenVPN tunnel. The algorithm is one of the following:

3des: DES algorithm with triple encryption

aes128: AES algorithm with 128-bit key

aes192: AES algorithm with 192-bit key

aes256: AES algorithm with 256-bit key

bf128: Blowfish algorithm with 128-bit key

bf256: Blowfish algorithm with 256-bit key

des: DES algorithm

The default algorithm is **bf128**.

Modes

Configuration mode

Configuration Statement

```
interfaces {
  openvpn vtunx {
    encryption algorithm
  }
}
```

Usage Guidelines

Use this command to specify the encryption algorithm that is used within an OpenVPN tunnel.

Use the **set** form of this command to specify the encryption algorithm that is used within a tunnel.

Use the **delete** form of this command to remove the encryption algorithm that is used within a tunnel and return to the default algorithm, which is the Blowfish algorithm with 128-bit key.

Use the **show** form of this command to view the encryption algorithm that is used within a tunnel.

interfaces openvpn <vtunx> firewall <action>

Applies a firewall rule set to an OpenVPN tunnel.

Syntax

```
set interfaces openvpn vtunx firewall { in | out } name
delete interfaces openvpn vtunx firewall [ { in | out } name ]
show interfaces openvpn vtunx firewall
```

Parameters

vtunx
The identifier for the OpenVPN interface. This may be **vtun0** to **vtunx**, where *x* is a non-negative integer.

in
The firewall rule set is applied to inbound traffic.

out
The firewall rule set is applied to outbound traffic.

name
Rule set for forwarded packets on inbound interface.

Modes

Configuration mode

Configuration Statement

```
openvpn vtunx {
  firewall {
    in name
  }
}
```

Usage Guidelines

Use the **set** form of this command to apply a firewall rule set to an OpenVPN tunnel.

Use the **delete** form of this command to remove a firewall rule set from an OpenVPN tunnel.

Use the **show** form of this command to display the firewall rule set applied to an OpenVPN tunnel.

interfaces openvpn <vtunx> hash <algorithm>

Specifies the hash algorithm to be used within an OpenVPN tunnel.

Syntax

set interfaces openvpn *vtunx* hash *algorithm*

delete interfaces openvpn *vtunx* hash

show interfaces openvpn *vtunx* hash

Command Default

The hash algorithm is SHA-1.

Parameters

vtunx

The identifier for the OpenVPN interface. This may be **vtun0** to **vtunx**, where *x* is a non-negative integer.

algorithm

The hash algorithm that is used within the OpenVPN tunnel. The algorithm is one of the following:

md5: MD5 algorithm

sha1: SHA-1 algorithm

sha256: SHA-256 algorithm

sha512: SHA-512 algorithm

The default algorithm is **sha1**.

Modes

Configuration mode

Configuration Statement

```
interfaces {
  openvpn vtunx {
    hash algorithm
  }
}
```

Usage Guidelines

Use this command to specify the hash algorithm that is used within an OpenVPN tunnel.

Use the **set** form of this command to specify the hash algorithm that is used within a tunnel.

Use the **delete** form of this command to remove the hash algorithm that is used within a tunnel and return to the default algorithm, which is SHA-1.

Use the **show** form of this command to view the hash algorithm that is used within a tunnel.

interfaces openvpn <vtunx> ipv6 address

Assigns an IPv6 address to an OpenVPN interface.

Syntax

```
set interfaces openvpn vtunx ipv6 address [ autoconf | eui64 ipv6prefix ]
```

```
delete interfaces openvpn vtunx ipv6 address [ autoconf | eui64 ipv6prefix ]
```

```
show interfaces openvpn vtunx ipv6 address [ autoconf | eui64 ]
```

Parameters

vtunx

The identifier for the OpenVPN interface. This may be **vtun0** to **vtunx**, where *x* is a non-negative integer.

autoconf

Generates an IPv6 address using the Stateless Address Autoconfiguration (SLAAC) protocol. Generate this address if the interface is performing a host function rather than a router function. This address can be specified in addition to static IPv6, static IPv4, and IPv4 DHCP addresses on the interface.

ipv6prefix

A 64-bit IPv6 address prefix used to configure an IPv6 address in EUI-64 format. The system concatenates this prefix with a 64-bit EUI-64 address derived from the 48-bit MAC address of the interface.

Modes

Configuration mode

Configuration Statement

```
interfaces {
  openvpn vtunx {
    ipv6 {
      address {
        autoconf
        eui64 ipv6prefix
      }
    }
  }
}
```

Usage Guidelines

Use this command to assign an IPv6 address to an OpenVPN interface.

Employ the **autoconf** keyword to direct the system to autoconfigure the address, using the SLAAC protocol defined in RFC 4862. Alternatively, you can provide an EUI-64 IPv6 address prefix so that the system constructs the IPv6 address.

If you want the system to use SLAAC to acquire addresses on this interface, then, in addition to setting this parameter, you must also disable IPv6 forwarding. Disable forwarding either globally by using the **system ipv6 disable-forwarding** command or specifically on this interface by using the **interfaces openvpn vtunx ipv6 disable-forwarding** command.

Use the **set** form of this command to assign an IPv6 address to an interface.

Use the **delete** form of this command to delete an IPv6 address from an interface.

Use the **show** form of this command to view settings of an IPv6 address configuration.

interfaces openvpn <vtunx> ipv6 disable-forwarding

Disables IPv6 packet forwarding on an OpenVPN interface.

Syntax

```
set interfaces openvpn vtunx ipv6 disable-forwarding
delete interfaces openvpn vtunx ipv6 disable-forwarding
show interfaces openvpn vtunx ipv6 disable-forwarding
```

Command Default

IPv6 packets are forwarded.

Parameters

vtunx

The identifier for the OpenVPN interface. This may be **vtun0** to **vtunx**, where *x* is a non-negative integer.

Modes

Configuration mode

Configuration Statement

```
interfaces {
  openvpn vtunx {
    ipv6 {
      disable-forwarding
    }
  }
}
```

Usage Guidelines

Use this command to disable IPv6 packet forwarding on an OpenVPN interface.

You can also disable IPv6 forwarding globally, that is, for all interfaces, by using the **system ipv6 disable-forwarding** command.

Use the **set** form of this command to disable IPv6 packet forwarding on an interface.

Use the **delete** form of this command to enable IPv6 packet forwarding on an interface.

Use the **show** form of this command to view the configuration of IPv6 packet forwarding on an interface.

interfaces openvpn <vtunx> ipv6 dup-addr-detect-transmits <number>

Specifies the number of times to transmit Neighbor Solicitation (NS) packets as part of the Duplicate Address Detection (DAD) process.

Syntax

set interfaces openvpn *vtunx* ipv6 dup-addr-detect-transmits *number*

delete interfaces openvpn *vtunx* ipv6 dup-addr-detect-transmits

show interfaces openvpn *vtunx* ipv6 dup-addr-detect-transmits

Command Default

One NS packet is transmitted as part of the DAD process.

Parameters

vtunx

The identifier for the OpenVPN interface. This may be **vtun0** to **vtunx**, where *x* is a non-negative integer.

number

The number of times to transmit NS packets as part of the DAD process. The default number is 1.

Modes

Configuration mode

Configuration Statement

```
interfaces {
  openvpn vtunx {
    ipv6 {
      dup-addr-detect-transmits number
    }
  }
}
```

Usage Guidelines

Use this command to specify the number of times to transmit NS packets as part of the DAD process.

Use the **set** form of this command to specify the number of times to transmit NS packets.

Use the **delete** form of this command to remove the number of times NS packets are transmitted and return to the default number of 1.

Use the **show** form of this command to view the number of times NS packets are transmitted.

interfaces openvpn <vtunx> ipv6 router-advert

Specifies the router advertisements (RA) to be sent from an OpenVPN interface.

Syntax

```
set interfaces openvpn vtunx ipv6 router-advert [ cur-hop-limit limit ] [ default-lifetime lifetime ] [ default-preference
preference ] [ link-mtu mtu ] [ managed-flag state ] [ max-interval interval ] [ min-interval interval ] [ other-config-flag state ]
[ prefix ipv6net [ autonomous-flag state | on-link-flag state | preferred-lifetime lifetime | valid-lifetime lifetime ] ]
[ reachable-time time ] [ retrans-timer time ] [ send-advert state ]
```

```
delete interfaces openvpn vtunx ipv6 router-advert [ cur-hop-limit ] [ default-lifetime ] [ default-preference ] [ link-mtu ]
[ managed-flag ] [ max-interval ] [ min-interval ] [ other-config-flag ] [ prefix ipv6net [ autonomous-flag | on-link-flag |
preferred-lifetime | valid-lifetime ] ] [ reachable-time ] [ retrans-timer ] [ send-advert ]
```

```
show interfaces openvpn vtunx ipv6 router-advert
```

Command Default

Router advertisements are not sent on an interface.

Parameters

vtunx

The identifier for the OpenVPN interface. This may be **vtun0** to **vtun** *x*, where *x* is a non-negative integer.

cur-hope-limit *limit*

Limits the Hop Count field of the IP header for outgoing (unicast) IP packets. This limit is placed in the Hop Count field. The limit ranges from 0 through 255. The default limit is 64. A limit of 0 means that the limit is unspecified by the router.

default-lifetime *lifetime*

Specifies the lifetime, in seconds, associated with the default router. The lifetime either is 0, which indicates the router is not a default router, or it ranges from the interval specified in the **max-interval** argument through 9000 (18.2 hours). If not entered, the lifetime is three times the interval specified in the **max-interval** argument.

default-preference *preference*

Specifies the preference associated with the default router. The preference is one of the following:

low: Makes the default router low preference.

medium: Makes the default router medium preference. The default preference is **medium**.

high: Makes the default router high preference.

link-mtu *mtu*

Specifies the MTU to be advertised for the link. The MTU either is 0 or it ranges from 1280 through the maximum MTU for the type of link, as defined in RFC 2464. The default MTU is 0, which means the MTU is not specified in the router advertisement message. That is because it is expected that the MTU is configured directly on the interface itself and not for routing advertisements. You can configure this option in cases where the link MTU is not well known. If the MTU entered here does not match the MTU configured on the interface, the system issues a warning but does not fail.

managed-flag *state*

Specifies whether to use the administered protocol for address autoconfiguration. The state is one of the following:

true: Specifies that hosts use the administered (stateful) protocol for address autoconfiguration in addition to any addresses autoconfigured using stateless address autoconfiguration.

false: Specifies that hosts use only stateless address autoconfiguration. The default state is **false**.

max-interval *interval*

Specifies the maximum time, in seconds, allowed between sending unsolicited multicast router advertisements from the interface. The interval ranges from 4 through 1800. The default interval is 600 (10 minutes).

min-interval *interval*

Specifies the minimum time, in seconds, allowed between sending unsolicited multicast router advertisements from the interface. The interval ranges from 3 through 0.75 times the interval specified in the **max-interval** argument. The default interval is 0.33 times the interval specified in the **max-interval** argument.

other-config-flag *state*

Specifies that the interface uses the administered (stateful) protocol for autoconfiguration of non-address information, as defined in RFC 4862. The state is one of the following:

true: Specifies that hosts use the administered protocol for autoconfiguration of non-address information.

false: Specifies that hosts use stateless autoconfiguration of non-address information. The default state is **false**.

prefix *ipv6net*

Multi-node. Specifies an IPv6 prefix, in the format *ipv6-address/prefix*, to be advertised on the IPv6 interface. You can define more than one IPv6 prefix by configuring multiple *prefix* configuration nodes.

autonomous-flag *state*

Specifies whether the IPv6 prefix can be used for autonomous address configuration as defined in RFC 4862. The state is one of the following:

true: Specifies that the prefix can be used for autonomous address configuration. The default state is **true**.

false: Specifies that the prefix cannot be used for autonomous address configuration.

on-link-flag *state*

Specifies whether the IPv6 prefix can be used for on-link determination, as defined in RFC 4862. The state is one of the following:

true: Specifies that the prefix can be used for on-link determination. The default state is **true**.

false: Specifies that the advertisement makes no statement about on-link or off-link properties of the prefix. For instance, the prefix might be used for address configuration with some addresses belonging to the prefix being on-link and others being off-link.

preferred-lifetime *lifetime*

Specifies the lifetime, in seconds, that the addresses generated from the IPv6 prefix through Stateless Address Autoconfiguration (SLAAC) is to remain preferred, as defined in RFC 4862. The lifetime is with respect to the time the packet is sent. The lifetime ranges from 1 through 4294967296 plus the **infinity** keyword, which represents forever. (The actual value of **infinity** is a byte in which all bits are set to 1s: 0xFFFFFFFF.) The default lifetime is 604800 (7 days).

valid-lifetime *lifetime*

Specifies the lifetime, in seconds, that the IPv6 prefix is valid for the purpose of on-link determination, as defined in RFC 4862. The lifetime is with respect to the time the packet is sent. The lifetime ranges from 1 through 4294967296 plus the **infinity** keyword, which represents forever. (The actual value of **infinity** is a byte in which all bits are set to 1s: 0xFFFFFFFF.) The default lifetime is 2592000 (30 days).

reachable-time *time*

Specifies the length of time, in milliseconds, for which the system assumes a neighbor is reachable after having received a reachability confirmation. This time is used by address resolution and the Neighbor Unreachability

Detection algorithm (see Section 7.3 of RFC 2461). The time ranges from 0 through 3600000, where 0 means the reachable time is not specified in the router advertisement message. The default time is 0.

retrans-timer *time*

Specifies the length of time, in milliseconds, between retransmitted NS messages. This time is used by address resolution and the Neighbor Unreachability Detection algorithm (see Sections 7.2 and 7.3 of RFC 2461). The time ranges from 0 through 4294967295, where 0 means the retransmit time is not specified in the router advertisement message. The default time is 0.

send-advert *state*

Specifies whether router advertisements are to be sent from this interface. The state is one of the following:

true: Sends router advertisements from this interface. The default state is **true**.

false: Does not send router advertisements from this interface. If this state is in effect, parameters in this configuration subtree are still used to configure the local implementation parameters.

Modes

Configuration mode

Configuration Statement

```

interfaces {
  openvpn vtunx {
    ipv6 {
      router-advert {
        cur-hop-limit limit
        default-lifetime lifetime
        default-preference preference
        link-mtu mtu
        managed-flag state
        max-interval interval
        min-interval interval
        other-config-flag state
        prefix ipv6net {
          autonomous-flag state
          on-link-flag state
          preferred-lifetime lifetime
          valid-lifetime lifetime
        }
        reachable-time time
        retrans-timer time
        send-advert state
      }
    }
  }
}

```

Usage Guidelines

Use this command to specify the RA to be sent from an OpenVPN interface.

Router advertisements are sent by IPv6 routers to advertise their existence to hosts on the network. IPv6 hosts do not send router advertisements.

If the **router-advert** node of the configuration tree is missing, router advertisements are not sent. In addition, if IPv6 forwarding is disabled either globally (by using the **system ipv6 disable-forwarding** command) or on the interface (by using the **interfaces openvpn vtunx ipv6 disable-forwarding** command), RA are not sent.

Most RA parameters are required by either the Neighbor Discovery (ND) protocol or the Stateless Address Autoconfiguration (SLAAC) protocol. These parameters are used both locally for the IPv6 implementation and become part of the RA messages sent to hosts on the network so that they can be configured appropriately.

Use the **set** form of this command to create the **router-advert** configuration node and begin to send RA.

Use the **delete** form of this command to remove the **router-advert** configuration node and stop sending RA.

Use the **show** form of this command to view RA configuration.

interfaces openvpn <vtunx> local-address <ipv4>

Specifies the tunnel IP address on the local end of an OpenVPN tunnel.

Syntax

```
set interfaces openvpn vtunx local-address ipv4 [ subnet-mask mask ]
```

```
delete interfaces openvpn vtunx local-address ipv4 [ subnet-mask ]
```

```
show interfaces openvpn vtunx local-address ipv4 [ subnet-mask ]
```

Parameters

vtunx

The identifier for the OpenVPN interface. This may be **vtun0** to **vtunx**, where *x* is a non-negative integer.

ipv4

Mandatory. An IPv4 address.

subnet-mask *mask*

A subnet mask for the network associated with the local address. A mask is required only when `interfaces openvpn <vtunx> device-type tap` on page 66 is set.

Modes

Configuration mode

Configuration Statement

```
interfaces {
  openvpn vtunx {
    local-address ipv4 {
      subnet-mask mask
    }
  }
}
```

Usage Guidelines

Use this command to specify the tunnel IP address on the local end of the OpenVPN tunnel. Only a single address can be specified. This address is required for site-to-site mode OpenVPN tunnels but not for client-server mode tunnels. The subnet mask is required only when the interface is configured as a broadcast interface by using the `interfaces openvpn vtunx device-type tap` command.

Use the **set** form of this command to specify the tunnel IP address on the local end of a tunnel.

Use the **delete** form of this command to remove the tunnel IP address from the local end of a tunnel.

Use the **show** form of this command to view the tunnel IP address on the local end of a tunnel.

interfaces openvpn <vtunx> local-host <ipv4>

Specifies the local IP address to which connections are accepted.

Syntax

set interfaces openvpn *vtunx* local-host *ipv4*

delete interfaces openvpn *vtunx* local-host

show interfaces openvpn *vtunx* local-host

Parameters

vtunx

The identifier for the OpenVPN interface. This may be **vtun0** to **vtunx**, where *x* is a non-negative integer.

ipv4

The IP address of the local physical interface. This address is the IP address on which connections are accepted. If not specified, then all connections are accepted.

Modes

Configuration mode

Configuration Statement

```
interfaces {
  openvpn vtunx {
    local-host ipv4
  }
}
```

Usage Guidelines

Use this command to specify the local IP address to which connections are accepted. This address can be used as a server endpoint in a client-server mode tunnel or the TCP-passive endpoint when TCP is used in site-to-site mode. The address can be an IP address on any network interface on this endpoint. If this address is specified, the OpenVPN process accepts only sessions coming in on the particular IP address, and this acceptance applies to both UDP and TCP. If an address is not specified, OpenVPN accepts incoming sessions on any interface.

Use the **set** form of this command to specify the local IP address to which connections are accepted.

Use the **delete** form of this command to remove the local IP address to which connections are accepted.

Use the **show** form of this command to view the local IP address to which connections are accepted.

interfaces openvpn <vtunx> local-port <port>

Specifies a local UDP or TCP port on which incoming sessions are accepted.

Syntax

set interfaces openvpn *vtunx* local-port *port*

delete interfaces openvpn *vtunx* local-port

show interfaces openvpn *vtunx* local-port

Command Default

The default port number is 1194.

Parameters

vtunx

The identifier for the OpenVPN interface. This may be **vtun0** to **vtunx**, where *x* is a non-negative integer.

port

The number of a port on which incoming sessions are accepted. The default port number is 1194.

Modes

Configuration mode

Configuration Statement

```
interfaces {
  openvpn vtunx {
    local-port port
  }
}
```

Usage Guidelines

Use this command to specify a local UDP or TCP port on which incoming sessions are accepted. This port can be used as a server endpoint in a client-server mode tunnel or the TCP-passive endpoint when TCP is used in site-to-site mode.

Use the **set** form of this command to specify a local port on which incoming sessions are accepted.

Use the **delete** form of this command to remove the local port on which incoming sessions are accepted.

Use the **show** form of this command to view the local port on which incoming sessions are accepted.

interfaces openvpn <vtunx> mode <mode>

Specifies the mode in which an OpenVPN interface operates.

Syntax

set interfaces openvpn *vtunx* mode *mode*

delete interfaces openvpn *vtunx* mode

show interfaces openvpn *vtunx* mode

Parameters

vtunx

The identifier for the OpenVPN interface. This may be **vtun0** to **vtunx**, where *x* is a non-negative integer.

mode

Mandatory. The mode in which an OpenVPN interface operates. The mode is one of the following:

client: Defines the endpoint as the client in a client-server tunnel.

site-to-site: Defines the endpoint as one end of a site-to-site tunnel.

server: Defines the endpoint as the server in a client-server tunnel.

Modes

Configuration mode

Configuration Statement

```
interfaces {
  openvpn vtunx {
    mode mode
  }
}
```

Usage Guidelines

Use this command to specify the mode in which an OpenVPN interface operates.

Use the **set** form of this command to specify the mode in which an interface operates.

Use the **delete** form of this command to remove the mode in which an interface operates.

Use the **show** form of this command to view the mode in which an interface operates.

interfaces openvpn <vtunx> openvpn-option <options>

Employs OpenVPN options that are not available with Brocade vRouter OpenVPN commands.

Syntax

set interfaces openvpn *vtunx* openvpn-option *options*

delete interfaces openvpn *vtunx* openvpn-option

show interfaces openvpn *vtunx* openvpn-option

Parameters

vtunx

The identifier for the OpenVPN interface. This may be **vtun0** to **vtunx**, where *x* is a non-negative integer.

options

Multi-node. A list of OpenVPN options to pass to the OpenVPN process.

You can define multiple OpenVPN option lists by creating multiple **openvpn-option** configuration nodes. Each must have a unique configuration.

Modes

Configuration mode

Configuration Statement

```
interfaces {
  openvpn vtunx {
    openvpn-option options
  }
}
```

Usage Guidelines

Use this command to employ additional OpenVPN options that are not available with Brocade vRouter OpenVPN commands. Because the OpenVPN process has over two hundred commands, only basic options are available with Brocade vRouter commands. This command provides access to all options available in OpenVPN. For more information about OpenVPN, go to <http://openvpn.net/>.

Use the **set** form of this command to employ additional options.

Use the **delete** form of this command to remove additional options.

Use the **show** form of this command to view additional options.

interfaces openvpn <vtunx> protocol <protocol>

Specifies the OpenVPN communications protocol.

Syntax

set interfaces openvpn *vtunx* protocol *protocol*

delete interfaces openvpn *vtunx* protocol

show interfaces openvpn *vtunx* protocol

Command Default

The default protocol is UDP.

Parameters

vtunx

The identifier for the OpenVPN interface. This may be **vtun0** to **vtunx**, where *x* is a non-negative integer.

protocol

An OpenVPN communications protocol. The protocol is one of the following:

tcp-active: Defines the transport protocol as active TCP.

tcp-passive: Defines the transport protocol as passive TCP.

udp: Defines the transport protocol as UDP. UDP is the default protocol.

Modes

Configuration mode

Configuration Statement

```
interfaces {
  openvpn vtunx {
    protocol protocol
  }
}
```

Usage Guidelines

Use this command to specify the OpenVPN communications protocol.

Use the **set** form of this command to specify the communications protocol.

Use the **delete** form of this command to remove the communications protocol.

Use the **show** form of this command to view the communications protocol.

interfaces openvpn <vtunx> remote-address <ipv4>

Specifies the IP address for the tunnel interface of the remote end of the OpenVPN tunnel.

Syntax

set interfaces openvpn *vtunx* remote-address *ipv4*

delete interfaces openvpn *vtunx* remote-address

show interfaces openvpn *vtunx* remote-address

Parameters

vtunx

The identifier for the OpenVPN interface. This may be **vtun0** to **vtunx**, where *x* is a non-negative integer.

ipv4

Mandatory. The tunnel IP address on the remote end of the OpenVPN tunnel.

Modes

Configuration mode

Configuration Statement

```
interfaces {
  openvpn vtunx {
    remote-address ipv4
  }
}
```

Usage Guidelines

Use this command to specify the tunnel IP address on the remote end of the OpenVPN tunnel. Only a single address can be specified. This address is required for site-to-site mode OpenVPN tunnels but not for client-server mode tunnels.

Use the **set** form of this command to specify the tunnel IP address on the remote end of the tunnel.

Use the **delete** form of this command to remove the tunnel IP address from the remote end of the tunnel.

Use the **show** form of this command to view the tunnel IP address on the remote end of the tunnel.

interfaces openvpn <vtunx> remote-configuration password <password>

Specifies the password for client authentication by OpenVPN Access Server.

Syntax

set interfaces openvpn *vtunx* remote-configuration password *password*

delete interfaces openvpn *vtunx* remote-configuration password

show interfaces openvpn *vtunx* remote-configuration password

Parameters

vtunx

The identifier for the OpenVPN interface. This may be **vtun0** to **vtunx**, where *x* is a non-negative integer.

password

A password to be used with a username for authentication by OpenVPN Access Server.

Modes

Configuration mode

Configuration Statement

```
interfaces {
  openvpn vtunx {
    remote-configuration {
      password password
    }
  }
}
```

Usage Guidelines

Use this command to specify a password that OpenVPN Access Server can use to authenticate a client. This password is used when the client initiates a connection with OpenVPN Access Server.

Use the **set** form of this command to specify a password.

Use the **delete** form of this command to remove a password.

Use the **show** form of this command to view a password.

interfaces openvpn <vtunx> remote-configuration server <address>

Specifies OpenVPN Access Server to which a client connects.

Syntax

set interfaces openvpn *vtunx* remote-configuration server *address*

delete interfaces openvpn *vtunx* remote-configuration server

show interfaces openvpn *vtunx* remote-configuration server

Parameters

vtunx

The identifier for the OpenVPN interface. This may be **vtun0** to **vtunx**, where *x* is a non-negative integer.

address

The IP address (or hostname) of OpenVPN Access Server.

Modes

Configuration mode

Configuration Statement

```
interfaces {
  openvpn vtunx {
    remote-configuration {
      server address
    }
  }
}
```

Usage Guidelines

Use this command to specify the IP address or hostname of OpenVPN Access Server to which a client connects when establishing an OpenVPN tunnel.

Use the **set** form of this command to specify the IP address or hostname.

Use the **delete** form of this command to remove the IP address or hostname.

Use the **show** form of this command to view the IP address or hostname.

interfaces openvpn <vtunx> remote-configuration tunnel-password <password>

Specifies the password used to establish an OpenVPN tunnel with an OpenVPN server.

Syntax

set interfaces openvpn *vtunx* remote-configuration tunnel-password *password*

delete interfaces openvpn *vtunx* remote-configuration tunnel-password

show interfaces openvpn *vtunx* remote-configuration tunnel-password

Parameters

vtunx

The identifier for the OpenVPN interface. This may be **vtun0** to **vtunx**, where *x* is a non-negative integer.

password

A password to be used with a username for tunnel establishment to an OpenVPN server.

Modes

Configuration mode

Configuration Statement

```
interfaces {
  openvpn vtunx {
    remote-configuration {
      tunnel-password password
    }
  }
}
```

Usage Guidelines

Use this command to specify a password used to establish an OpenVPN tunnel with an OpenVPN server. The password is required only if the OpenVPN server has Autologin disabled and you are using OpenVPN Access Server to provide information about OpenVPN tunnel configuration.

Use the **set** form of this command to specify a password.

Use the **delete** form of this command to remove a password.

Use the **show** form of this command to a view password.

interfaces openvpn <vtunx> remote-configuration tunnel-username <username>

Specifies a username used to establish an OpenVPN tunnel with an OpenVPN server.

Syntax

set interfaces openvpn *vtunx* remote-configuration tunnel-username *username*

delete interfaces openvpn *vtunx* remote-configuration tunnel-username

show interfaces openvpn *vtunx* remote-configuration tunnel-username

Parameters

vtunx

The identifier for the OpenVPN interface. This may be **vtun0** to **vtunx**, where *x* is a non-negative integer.

username

A username to be used with a password for tunnel establishment to an OpenVPN server.

Modes

Configuration mode

Configuration Statement

```
interfaces {
  openvpn vtunx {
    remote-configuration {
      tunnel-username username
    }
  }
}
```

Usage Guidelines

Use this command to specify a username used to establish an OpenVPN tunnel with an OpenVPN server. The username is required only if the OpenVPN server has Autologin disabled and you are using OpenVPN Access Server to provide information about OpenVPN tunnel configuration.

Use the **set** form of this command to specify a username.

Use the **delete** form of this command to remove a username.

Use the **show** form of this command to view a username.

interfaces openvpn <vtunx> remote-configuration username <username>

Specifies a username for client authentication by OpenVPN Access Server.

Syntax

set interfaces openvpn *vtunx* remote-configuration username *username*

delete interfaces openvpn *vtunx* remote-configuration username

show interfaces openvpn *vtunx* remote-configuration username

Parameters

vtunx

The identifier for the OpenVPN interface. This may be **vtun0** to **vtunx**, where *x* is a non-negative integer.

username

A username to be used with a password for authentication by OpenVPN Access Server.

Modes

Configuration mode

Configuration Statement

```
interfaces {
  openvpn vtunx {
    remote-configuration {
      username username
    }
  }
}
```

Usage Guidelines

Use this command to specify a username that OpenVPN Access Server can use to authenticate a client. This username is used when the client initiates a connection with OpenVPN Access Server.

Use the **set** form of this command to specify a username.

Use the **delete** form of this command to remove a username.

Use the **show** form of this command to view a username.

interfaces openvpn <vtunx> remote-host <hostname>

Specifies a remote IP address or hostname to which connections are made.

Syntax

set interfaces openvpn *vtunx* remote-host *hostname*

delete interfaces openvpn *vtunx* remote-host

show interfaces openvpn *vtunx* remote-host

Parameters

vtunx

The identifier for the OpenVPN interface. This may be **vtun0** to **vtunx**, where *x* is a non-negative integer.

hostname

A remote IP address or hostname to which connections are made.

Modes

Configuration mode

Configuration Statement

```
interfaces {
  openvpn vtunx {
    remote-host hostname
  }
}
```

Usage Guidelines

Use this command to specify a remote IP address or hostname to which connections are made. This address or hostname is required by a client to specify a server endpoint in a client-server mode tunnel. It is also required by both sides in site-to-site mode.

Use the **set** form of this command to specify a remote IP address or hostname to which connections are made.

Use the **delete** form of this command to remove a remote IP address or hostname to which connections are made.

Use the **show** form of this command to view a remote IP address or hostname to which connections are made.

interfaces openvpn <vtunx> remote-port <port>

Specifies a port on which outgoing sessions are sent.

Syntax

set interfaces openvpn *vtunx* remote-port *port*

delete interfaces openvpn *vtunx* remote-port

show interfaces openvpn *vtunx* remote-port

Command Default

The default port number is 1194.

Parameters

vtunx

The identifier for the OpenVPN interface. This may be **vtun0** to **vtunx**, where *x* is a non-negative integer.

port

The number of a port on which outgoing sessions are sent. The default port number is 1194.

Modes

Configuration mode

Configuration Statement

```
interfaces {
  openvpn vtunx {
    remote-port port
  }
}
```

Usage Guidelines

Use this command to specify a remote UDP or TCP port on which outgoing sessions are sent. This port can be used as a client endpoint in a client-server mode tunnel, either endpoint when UDP is used in site-to-site mode, or the TCP-active endpoint when TCP is used in site-to-site mode. Note that, if specified, the remote port setting on one endpoint must match the local port setting on the other, and conversely.

Use the **set** form of this command to specify a remote UDP or TCP port on which outgoing sessions are sent.

Use the **delete** form of this command to remove a remote UDP or TCP port on which outgoing sessions are sent.

Use the **show** form of this command to view a remote UDP or TCP port on which outgoing sessions are sent.

interfaces openvpn <vtunx> replace-default-route

Specifies that the default route should be through the OpenVPN tunnel.

Syntax

set interfaces openvpn *vtunx* replace-default-route [*local*]

delete interfaces openvpn *vtunx* replace-default-route

show interfaces openvpn *vtunx* replace-default-route

Parameters

vtunx

The identifier for the OpenVPN interface. This may be **vtun0** to **vtunx**, where *x* is a non-negative integer.

local

Optional. This option must be set if and only if the two tunnel endpoints are directly connected, i.e., on the same subnet.

Modes

Configuration mode

Configuration Statement

```
interfaces {
  openvpn vtunx {
    replace-default-route {
      local
    }
  }
}
```

Usage Guidelines

Use this command to tell OpenVPN that the default route should be replaced by a route through the VPN tunnel, i.e., split tunneling should be disabled. Note that, when set, this option has different effects depending on the OpenVPN mode in which the endpoint operates.

If the endpoint is in site-to-site mode or client mode, setting **replace-default-route** will replace the default route on this endpoint with a route through VPN tunnel. In other words, it disables split tunneling on this endpoint.

If the endpoint is in server mode, setting **replace-default-route** will cause the clients connecting to this server to replace their default route. In other words, it disables split tunneling on the clients.

Use the **set** form of this command to specify that the default route should be through the OpenVPN tunnel.

Use the **delete** form of this command to remove the configuration.

Use the **show** form of this command to view the configuration.

interfaces openvpn <vtunx> server

Defines an OpenVPN server mode endpoint.

Syntax

set interfaces openvpn *vtunx* server

delete interfaces openvpn *vtunx* server

show interfaces openvpn *vtunx* server

Parameters

vtunx

The identifier for the OpenVPN interface. This may be **vtun0** to **vtunx**, where *x* is a non-negative integer.

Modes

Configuration mode

Configuration Statement

```
interfaces {
  openvpn vtunx {
    server {
    }
  }
}
```

Usage Guidelines

Use this command to define an OpenVPN server mode endpoint.

Use the **set** form of this command to create the server mode configuration node.

Use the **delete** form of this command to remove the server mode configuration node.

Use the **show** form of this command to view the configuration.

interfaces openvpn <vtunx> server client <client-name>

Defines a client site on the server in a client-server environment.

Syntax

set interfaces openvpn *vtunx* server client *client-name*

delete interfaces openvpn *vtunx* server client

show interfaces openvpn *vtunx* server client

Parameters

vtunx

The identifier for the OpenVPN interface. This may be **vtun0** to **vtunx**, where *x* is a non-negative integer.

client-name

Mandatory. The "name" of the client. It corresponds to the "common name" contained in the client's certificate. When a client initiates the VPN session, the server uses the name in the certificate to look up and apply client-specific settings (if any).

Modes

Configuration mode

Configuration Statement

```
interfaces {
  openvpn vtunx {
    server {
      client client-name {
      }
    }
  }
}
```

Usage Guidelines

Use this command to define a client site on the server in a client-server environment.

NOTE

Committing configuration changes to this configuration node does not result in the OpenVPN process being restarted. The configuration change will take effect the next time the client connects to the server.

Use the **set** form of this command to create the client configuration node.

Use the **delete** form of this command to remove the client configuration node.

Use the **show** form of this command to view the configuration.

interfaces openvpn <vtunx> server client <client-name> disable

Specifies a client that will be disallowed from connecting to the OpenVPN server.

Syntax

set interfaces openvpn *vtunx* server client *client-name* disable

delete interfaces openvpn *vtunx* server client *client-name* disable

show interfaces openvpn *vtunx* server client *client-name*

Command Default

Clients are allowed to connect to the OpenVPN server.

Parameters

vtunx

The identifier for the OpenVPN interface. This may be **vtun0** to **vtunx**, where *x* is a non-negative integer.

client-name

Mandatory. The "name" of the client. It corresponds to the "common name" contained in the client's certificate.

Modes

Configuration mode

Configuration Statement

```
interfaces {
  openvpn vtunx {
    server {
      client client-name {
        disable
      }
    }
  }
}
```

Usage Guidelines

Use this command to specify a client that will be disallowed from connecting to the OpenVPN server the next time it tries to connect (and any subsequent attempts). This will not affect the client's current connection. The current connection can be reset using the **monitor interfaces openvpn *vtunx* traffic** command.

NOTE

If an OpenVPN client tries to connect to an OpenVPN server and is refused by the server, the client process will exit.

Use the **set** form of this command to specify a client that will be disallowed from connecting to the OpenVPN server on any subsequent attempts.

Use the **delete** form of this command to allow the client to connect to the OpenVPN server.

NOTE

An OpenVPN client needs to be restarted before it will initiate a new connection to the OpenVPN server.

Use the **show** form of this command to view the configuration.

interfaces openvpn <vtunx> server client <client-name> ip <ipv4>

Specifies the IP address of a client in a client-server environment.

Syntax

set interfaces openvpn *vtunx* server client *client-name* ip *ipv4*

delete interfaces openvpn *vtunx* server client *client-name* ip

show interfaces openvpn *vtunx* server client *client-name* ip

Parameters

vtunx

The identifier for the OpenVPN interface. This may be **vtun0** to **vtunx**, where *x* is a non-negative integer.

client-name

Mandatory. The "name" of the client. It corresponds to the "common name" contained in the client's certificate. When a client initiates the VPN session, the server uses the name in the certificate to look up and apply client-specific settings (if any).

ipv4

The IP address to be assigned to the client.

Modes

Configuration mode

Configuration Statement

```
interfaces {
  openvpn vtunx {
    server {
      client client-name {
        ip ipv4
      }
    }
  }
}
```

Usage Guidelines

Use this command to specify the IP address to assign to the client in a client-server environment.

NOTE

Committing configuration changes to this configuration node does not result in the OpenVPN process being restarted. The configuration change will take effect the next time the client connects to the server.

Use the **set** form of this command to specify the IP address to assign to the client in a client-server environment.

Use the **delete** form of this command to remove the IP address.

Use the **show** form of this command to view the IP address.

interfaces openvpn <vtunx> server client <client-name> push-route <ipv4net>

Specifies a route to be pushed to a client in a client-server environment.

Syntax

```
set interfaces openvpn vtunx server client client-name push-route ipv4net
delete interfaces openvpn vtunx server client client-name push-route ipv4net
show interfaces openvpn vtunx server client client-name push-route
```

Parameters

vtunx

The identifier for the OpenVPN interface. This may be **vtun0** to **vtunx**, where *x* is a non-negative integer.

client-name

Mandatory. The "name" of the client. It corresponds to the "common name" contained in the client's certificate. When a client initiates the VPN session, the server uses the name in the certificate to look up and apply client-specific settings (if any).

ipv4net

Multi-node. The subnet to be made accessible to the OpenVPN client through the OpenVPN server.

You can define multiple subnets to push to clients by creating multiple **push-route** configuration nodes. Each must have a unique IPv4net address.

Modes

Configuration mode

Configuration Statement

```
interfaces {
  openvpn vtunx {
    server {
      client client-name {
        push-route ipv4net
      }
    }
  }
}
```

Usage Guidelines

Use this command to specify a subnet that the client can access by routing packets through the server.

NOTE

Committing configuration changes to this configuration node does not result in the OpenVPN process being restarted. The configuration change will take effect the next time the client connects to the server. Use the **reset interfaces openvpn vtunx** command on the client to reset the connection.

Use the **set** form of this command to specify a route to be pushed to all clients.

Use the **delete** form of this command to remove the route configuration.

Use the **show** form of this command to view the route configuration.

interfaces openvpn <vtunx> server client <client-name> subnet <ipv4net>

Specifies a subnet at a client site in a client-server environment.

Syntax

set interfaces openvpn *vtunx* server client *client-name* subnet *ipv4net*

delete interfaces openvpn *vtunx* server client *client-name* subnet

show interfaces openvpn *vtunx* server client *client-name* subnet

Parameters

vtunx

The identifier for the OpenVPN interface. This may be **vtun0** to **vtunx**, where *x* is a non-negative integer.

client-name

Mandatory. The "name" of the client. It corresponds to the "common name" contained in the client's certificate. When a client initiates the VPN session, the server uses the name in the certificate to look up and apply client-specific settings (if any).

ipv4net

Multi-node. A subnet at the client site.

You can define multiple subnet addresses by creating multiple **subnet** configuration nodes. Each must have a unique IPv4 network address.

Modes

Configuration mode

Configuration Statement

```

interfaces {
  openvpn vtunx {
    server {
      client client-name {
        subnet ipv4net
      }
    }
  }
}

```

Usage Guidelines

Use this command to identify a subnet at a client site in a client-server environment.

NOTE

Committing configuration changes to this configuration node does not result in the OpenVPN process being restarted. The configuration change will take effect the next time the client connects to the server.

Use the **set** form of this command to specify the subnet.

Use the **delete** form of this command to remove the subnet configuration.

Use the **show** form of this command to view the subnet configuration.

interfaces openvpn <vtunx> server domain-name <domain-name>

Provides the domain name for OpenVPN clients.

Syntax

set interfaces openvpn *vtunx* server domain-name *domain-name*

delete interfaces openvpn *vtunx* server domain-name

show interfaces openvpn *vtunx* server domain-name

Parameters

vtunx

The identifier for the OpenVPN interface. This may be **vtun0** to **vtunx**, where *x* is a non-negative integer.

domain-name

The domain name to be given to OpenVPN clients connected to this OpenVPN server. A domain name can include letters, numbers, hyphens ("-"), and one period ("."). For example, "vyatta.com".

Modes

Configuration mode

Configuration Statement

```
interfaces {
  openvpn vtunx {
    server {
      domain-name domain-name
    }
  }
}
```

Usage Guidelines

Use this command to specify the domain name to be given to OpenVPN clients connected to this OpenVPN server.

NOTE

Certain applications on Windows clients (for example, "ipconfig"), refer to the domain name as the "Connection-specific DNS Suffix".

Use the **set** form of this command to specify the domain name to be given to OpenVPN clients connected to this OpenVPN server.

Use the **delete** form of this command to remove the domain name configuration.

Use the **show** form of this command to view the domain name configuration.

interfaces openvpn <vtunx> server max-connections <number>

Specifies the maximum number of clients that can connect to the server in a client-server environment.

Syntax

set interfaces openvpn *vtunx* server max-connections *number*

delete interfaces openvpn *vtunx* server max-connections

show interfaces openvpn *vtunx* server max-connections

Command Default

The number of clients that can connect is either 1024 or the limit of system resources.

Parameters

vtunx

The identifier for the OpenVPN interface. This may be **vtun0** to **vtunx**, where *x* is a non-negative integer.

number

The maximum number of client connections that the server accepts. The number ranges from 1 through 1024. The default is 1024.

Modes

Configuration mode

Configuration Statement

```
interfaces {
  openvpn vtunx {
    server {
      max-connections number
    }
  }
}
```

Usage Guidelines

Use this command to specify the maximum number of client connections that the server accepts. Once the limit is reached, any additional clients that attempt to connect to the server will be refused.

Use the **set** form of this command to specify the maximum number of clients that can connect to the server.

Use the **delete** form of this command to return to the default configuration.

Use the **show** form of this command to view the maximum number of client connections configured.

interfaces openvpn <vtunx> server name-server <ipv4>

Specifies a name server address to be pushed to clients in a client-server environment.

Syntax

set interfaces openvpn *vtunx* server name-server *ipv4*

delete interfaces openvpn *vtunx* server name-server

show interfaces openvpn *vtunx* server name-server

Parameters

vtunx

The identifier for the OpenVPN interface. This may be **vtun0** to **vtunx**, where *x* is a non-negative integer.

ipv4

Multi-node. The IPv4 address of the name server to push to clients.

You can define multiple name server addresses to push to clients by creating multiple **name-server** configuration nodes. Each must have a unique IPv4 address.

Modes

Configuration mode

Configuration Statement

```
interfaces {
  openvpn vtunx {
    server {
      name-server ipv4
    }
  }
}
```

Usage Guidelines

Use this command to specify an IPv4 address of a name server to be pushed to clients in an OpenVPN client-server environment. This is supported by Windows clients. Other client types may not support this.

Use the **set** form of this command to specify an IPv4 address of a name server to be pushed to clients.

Use the **delete** form of this command to remove the name server configuration.

Use the **show** form of this command to view the name server configuration.

interfaces openvpn <vtunx> server push-route <ipv4net>

Specifies a route to be pushed to all clients in a client-server environment.

Syntax

set interfaces openvpn *vtunx* server push-route *ipv4net*

delete interfaces openvpn *vtunx* server push-route

show interfaces openvpn *vtunx* server push-route

Parameters

vtunx

The identifier for the OpenVPN interface. This may be **vtun0** to **vtunx**, where *x* is a non-negative integer.

ipv4net

Multi-node. The subnet to be made accessible to the OpenVPN clients through the OpenVPN server.

You can define multiple subnets to push to clients by creating multiple **push-route** configuration nodes. Each must have a unique IPv4net address.

Modes

Configuration mode

Configuration Statement

```
interfaces {
  openvpn vtunx {
    server {
      push-route ipv4net
    }
  }
}
```

Usage Guidelines

Use this command to specify a subnet that all clients can access by routing packets through the server. This route is pushed to all clients and the OpenVPN process is restarted.

Use the **set** form of this command to specify a route to be pushed to all clients.

Use the **delete** form of this command to remove the route configuration.

Use the **show** form of this command to view the route configuration.

interfaces openvpn <vtunx> server subnet <ipv4net>

Specifies the subnet from which client IP addresses are allocated.

Syntax

set interfaces openvpn *vtunx* server subnet *ipv4net*

delete interfaces openvpn *vtunx* server subnet

show interfaces openvpn *vtunx* server subnet

Parameters

vtunx

The identifier for the OpenVPN interface. This may be **vtun0** to **vtunx**, where *x* is a non-negative integer.

ipv4net

The subnet from which client IP addresses are allocated. The prefix for the subnet must be /29 or smaller.

Modes

Configuration mode

Configuration Statement

```

interfaces {
  openvpn vtunx {
    server {
      subnet ipv4net
    }
  }
}

```

Usage Guidelines

This command is used on the server side of a client-server OpenVPN connection and specifies the subnet on which the remote clients will receive IP addresses.

Use this command to specify the subnet from which client IP addresses are allocated.

Use the **set** form of this command to specify the subnet.

Use the **delete** form of this command to remove the subnet configuration.

Use the **show** form of this command to view the subnet configuration.

interfaces openvpn <vtunx> server topology <topology>

Specifies the topology to use in a client-server environment.

Syntax

set interfaces openvpn *vtunx* server topology *topology*

delete interfaces openvpn *vtunx* server topology

show interfaces openvpn *vtunx* server topology

Command Default

The default is subnet.

Parameters

vtunx

The identifier for the OpenVPN interface. This may be **vtun0** to **vtunx**, where *x* is a non-negative integer.

topology

The topology used in client-server mode. Supported values are as follows:

point-to-point: This topology provides "client isolation" (that is, the clients cannot reach each other) but is not compatible with Windows clients, and routing protocols using a broadcast-style network would not work with this.

subnet: This topology is compatible with OpenVPN clients on Windows hosts and is the default if topology is not set. Routing protocols that are configured to use a broadcast-style network should work with this topology. However, this topology does not provide "client isolation" (that is, the clients can reach each other).

Modes

Configuration mode

Configuration Statement

```
interfaces {
  openvpn vtunx {
    server {
      topology topology
    }
  }
}
```

Usage Guidelines

Use this command to specify the topology to use in a client-server environment.

Use the **set** form of this command to specify the topology.

Use the **delete** form of this command to remove the topology configuration.

Use the **show** form of this command to view the topology configuration.

interfaces openvpn <vtunx> shared-secret-key-file <filename>

Specifies the file containing a secret key shared with the remote end of the tunnel.

Syntax

set interfaces openvpn *vtunx* shared-secret-key-file *filename*

delete interfaces openvpn *vtunx* shared-secret-key-file

show interfaces openvpn *vtunx* shared-secret-key-file

Parameters

vtunx

The identifier for the OpenVPN interface. This may be **vtun0** to **vtunx**, where *x* is a non-negative integer.

filename

The shared secret file. The file can be generated using the **generate vpn openvpn-key** operational command, and the other endpoint must have the same file for the preshared secret mechanism to work.

Modes

Configuration mode

Configuration Statement

```
interfaces {
  openvpn vtunx {
    shared-secret-key-file filename
  }
}
```

Usage Guidelines

Use this command to specify the file containing a secret key shared with the remote end of the tunnel.

Certificate and key files are assumed to be in `/config/auth` unless an absolute path is specified.

Use the **set** form of this command to specify the file containing a secret key shared with the remote end of the tunnel.

Use the **delete** form of this command to remove the shared secret key file configuration.

Use the **show** form of this command to view the shared secret key file configuration.

interfaces openvpn <vtunx> tls

Defines a Transport Layer Security (TLS) configuration.

Syntax

```
set interfaces openvpn vtunx tls
```

```
delete interfaces openvpn vtunx tls
```

```
show interfaces openvpn vtunx tls
```

Parameters

vtunx

The identifier for the OpenVPN interface. This may be **vtun0** to **vtunx**, where *x* is a non-negative integer.

Modes

Configuration mode

Configuration Statement

```
interfaces {
  openvpn vtunx {
    tls {
    }
  }
}
```

Usage Guidelines

Use this command to define a Transport Layer Security (TLS) configuration.

Use the **set** form of this command to create the TLS configuration node.

Use the **delete** form of this command to remove the TLS configuration node.

Use the **show** form of this command to view the TLS configuration.

interfaces openvpn <vtunx> tls ca-cert-file <filename>

Specifies the file containing the certificate authority's certificate.

Syntax

set interfaces openvpn *vtunx* tls ca-cert-file *filename*

delete interfaces openvpn *vtunx* tls ca-cert-file

show interfaces openvpn *vtunx* tls ca-cert-file

Parameters

vtunx

The identifier for the OpenVPN interface. This may be **vtun0** to **vtunx**, where *x* is a non-negative integer.

filename

The file containing the certificate authority's certificate, which will be used to validate the other endpoint's certificate.

Modes

Configuration mode

Configuration Statement

```
interfaces {
  openvpn vtunx {
    tls {
      ca-cert-file filename
    }
  }
}
```

Usage Guidelines

Use this command to specify the file containing the certificate authority's certificate.

Certificate and key files are assumed to be in `/config/auth` unless an absolute path is specified.

Use the **set** form of this command to specify the file containing the certificate authority's certificate.

Use the **delete** form of this command to remove the pointer to the file containing the certificate authority's certificate.

Use the **show** form of this command to view the configuration.

interfaces openvpn <vtunx> tls cert-file <filename>

Specifies the file containing the endpoint's own certificate.

Syntax

set interfaces openvpn *vtunx* tls cert-file *filename*

delete interfaces openvpn *vtunx* tls cert-file

show interfaces openvpn *vtunx* tls cert-file

Parameters

vtunx

The identifier for the OpenVPN interface. This may be **vtun0** to **vtunx**, where *x* is a non-negative integer.

filename

The file containing the endpoint's own certificate, which will be presented to the other endpoint during the TLS negotiation.

Modes

Configuration mode

Configuration Statement

```
interfaces {
  openvpn vtunx {
    tls {
      cert-file filename
    }
  }
}
```

Usage Guidelines

Use this command to specify the file containing the endpoint's own certificate.

Certificate and key files are assumed to be in `/config/auth` unless an absolute path is specified.

Use the **set** form of this command to specify the file containing the endpoint's certificate.

Use the **delete** form of this command to remove the pointer to the file containing the endpoint's certificate.

Use the **show** form of this command to view the configuration.

interfaces openvpn <vtunx> tls crl-file <filename>

Specifies the file containing a certificate revocation list.

Syntax

set interfaces openvpn *vtunx* tls crl-file *filename*

delete interfaces openvpn *vtunx* tls crl-file

show interfaces openvpn *vtunx* tls crl-file

Parameters

vtunx

The identifier for the OpenVPN interface. This may be **vtun0** to **vtunx**, where *x* is a non-negative integer.

filename

A file containing a list of certificates that have been revoked, which will prevent endpoints with these certificates from establishing a VPN tunnel. Specifying this file in the TLS configuration is optional.

Modes

Configuration mode

Configuration Statement

```
interfaces {
  openvpn vtunx {
    tls {
      crl-file filename
    }
  }
}
```

Usage Guidelines

Use this command to specify the file containing a certificate revocation list.

The file is assumed to be located in `/config/auth` unless an absolute path is specified.

Use the **set** form of this command to specify the file containing a certificate revocation list.

Use the **delete** form of this command to remove the pointer to the file containing a certificate revocation list.

Use the **show** form of this command to view the configuration.

interfaces openvpn <vtunx> tls dh-file <filename>

Specifies the file containing Diffie Hellman parameters.

Syntax

set interfaces openvpn *vtunx* **tls dh-file** *filename*

delete interfaces openvpn *vtunx* **tls dh-file**

show interfaces openvpn *vtunx* **tls dh-file**

Parameters

vtunx

The identifier for the OpenVPN interface. This may be **vtun0** to **vtunx**, where *x* is a non-negative integer.

filename

A file containing Diffie Hellman parameters that are required only by the endpoint taking the passive role in the TLS negotiation.

Modes

Configuration mode

Configuration Statement

```
interfaces {
  openvpn vtunx {
    tls {
      dh-file filename
    }
  }
}
```

Usage Guidelines

Use this command to specify the file containing Diffie Hellman parameters.

The file is assumed to be in `/config/auth` unless an absolute path is specified.

Use the **set** form of this command to specify the file containing Diffie Hellman parameters.

Use the **delete** form of this command to remove the pointer to the file containing Diffie Hellman parameters.

Use the **show** form of this command to view the configuration.

interfaces openvpn <vtunx> tls key-file <filename>

Specifies the file containing the endpoint's own private key.

Syntax

set interfaces openvpn *vtunx* tls key-file *filename*

delete interfaces openvpn *vtunx* tls key-file

show interfaces openvpn *vtunx* tls key-file

Parameters

vtunx

The identifier for the OpenVPN interface. This may be **vtun0** to **vtunx**, where *x* is a non-negative integer.

filename

A file containing the endpoint's own private key, which is kept secret from everyone.

Modes

Configuration mode

Configuration Statement

```
interfaces {
  openvpn vtunx {
    tls {
      key-file filename
    }
  }
}
```

Usage Guidelines

Use this command to specify the file containing the endpoint's own private key.

The file is assumed to be in `/config/auth` unless an absolute path is specified.

Use the **set** form of this command to specify the file containing the endpoint's own private key.

Use the **delete** form of this command to remove the pointer to the file containing the endpoint's own private key.

Use the **show** form of this command to view the configuration.

interfaces openvpn <vtunx> tls role <role>

Specifies the TLS role the endpoint will take.

Syntax

set interfaces openvpn *vtunx* tls role *role*

delete interfaces openvpn *vtunx* tls

show interfaces openvpn *vtunx* tls

Parameters

vtunx

The identifier for the OpenVPN interface. This may be **vtun0** to **vtunx**, where *x* is a non-negative integer.

role

The TLS role that the endpoint will take. Supported values are as follows:

active: The endpoint takes the active role.

passive: The endpoint takes the passive role.

Modes

Configuration mode

Configuration Statement

```
interfaces {
  openvpn vtunx {
    tls {
      role role
    }
  }
}
```

Usage Guidelines

Use this command to specify the TLS role the endpoint will take.

Use the **set** form of this command to specify the TLS role the endpoint will take.

Use the **delete** form of this command to remove the TLS role.

Use the **show** form of this command to view the configuration.

monitor interfaces openvpn <vtunx> traffic

Displays (captures) traffic on the OpenVPN interface.

Syntax

```
monitor interfaces openvpn vtunx traffic [ detail [ filter filter-name | unlimited [filter filter-name ]] | filter filter-name | save filename | unlimited [ filter filter-name ]]
```

Parameters

interface

The OpenVPN interface name.

detail

Provides detailed information about the monitored OpenVPN traffic.

filter *filter-name*

Applies the specific PCAP (packet capture) filter to traffic.

save *filename*

Saves the monitored traffic to the specified file.

unlimited

Monitors an unlimited amount of traffic.

Modes

Operational mode

Configuration Statement

```
monitor {
  interfaces {
    openvpn vtunx {
      traffic {
        detail filter filter-name
        detail unlimited filter filter-name
        filter filter-name
        save filename
        unlimited filter filter-name
      }
    }
  }
}
```

Usage Guidelines

Use this command to capture traffic on the OpenVPN interface.

Examples

The following example shows the output of this command.

```
vyatta@vyatta# monitor interfaces openvpn vtun0 traffic
Capturing traffic on vtun0 ...
```

reset openvpn interface <vtunx>

Resets all tunnel connections on an OpenVPN interface.

Syntax

```
reset openvpn interface vtunx
```

Parameters

vtunx

The identifier for the OpenVPN interface. This may be **vtun0** to **vtunx**, where *x* is a non-negative integer.

Modes

Operational mode

Usage Guidelines

Use this command to reset all tunnel connections on an OpenVPN interface. In a site-to-site environment, the connection will be re-established after it is reset. This is also the case on the client side in a client-server environment. On the server side, in a client-server environment, all connections are dropped. The server will then wait for the clients to re-establish the connections.

NOTE

The OpenVPN process does not get restarted by this command, though all tunnel connections are reset.

reset openvpn interface <vtunx> client <client-name>

Resets a client connection.

Syntax

```
reset openvpn interface vtunx client client-name
```

Parameters

vtunx

The identifier for the OpenVPN interface. This may be **vtun0** to **vtunx**, where x is a non-negative integer.

client-name

The "name" of the client. It corresponds to the "common name" contained in the client's certificate. When a client initiates the VPN session, the server uses the name in the certificate to look up and apply client-specific settings (if any). This can be determined using the **show openvpn server status** command.

Modes

Operational mode

Usage Guidelines

Use this command to reset the connection to a specific client. The connection to the client will be disconnected and the server will wait for the client to re-establish the connection.

NOTE

The OpenVPN process does not get restarted by this command.

show interfaces openvpn

Displays a status summary of all OpenVPN interfaces.

Syntax

```
show interfaces openvpn
```

Modes

Operational mode

Usage Guidelines

Use this command to display the high level status of all OpenVPN interfaces on the system.

Examples

The following example shows the output of this command.

```
vyatta@vyatta# show interfaces openvpn
Codes: S - State, L - Link, u - Up, D - Down, A - Admin Down
Interface      IP Address      S/L  Description
-----
vtun0          192.168.200.1/32  u/u
```

show interfaces openvpn <interface>

Displays the detailed status of an OpenVPN interface.

Syntax

```
show interfaces openvpn interface
```

Parameters

interface

The OpenVPN interface name.

Modes

Operational mode

Usage Guidelines

Use this command to display detailed status of an OpenVPN interface.

Examples

The following example shows the output of this command.

```
vyatta@vyatta# show interfaces openvpn vtun0
vtun0: <POINTOPOINT,MULTICAST,NOARP,UP,LOWER_UP> mtu 1500 qdisc pfifo_fast state UNKNOWN qlen 100
link/[65534]
inet 192.168.200.1 peer 192.168.200.2/32 scope global vtun0

RX:  bytes      packets      errors      dropped      overrun      mcast
    1216         16           0            0            0            0
TX:  bytes      packets      errors      dropped      carrier      collisions
     0           0            0            0            0            0
```


show interfaces openvpn <interface> brief

Displays the status summary of an OpenVPN interface.

Syntax

```
show interfaces openvpn interface brief
```

Parameters

interface

The OpenVPN interface name.

Modes

Operational mode

Usage Guidelines

Use this command to display a status summary of an OpenVPN interface.

Examples

The following example shows the output of this command.

```
vyatta@vyatta# show interfaces openvpn vtun0 brief
Codes: S - State, L - Link, u - Up, D - Down, A - Admin Down
Interface      IP Address      S/L  Description
-----
vtun0          192.168.200.1/32  u/u
```

show interfaces openvpn detail

Displays the detailed status of all OpenVPN interfaces on the system.

Syntax

```
show interfaces openvpn detail
```

Modes

Operational mode

Usage Guidelines

Use this command to display detailed status of all OpenVPN interfaces on the system.

Examples

The following example shows the output of this command.

```
vyatta@vyatta# show interfaces openvpn detail
vtun0: <POINTOPOINT,MULTICAST,NOARP,UP,LOWER_UP> mtu 1500 qdisc pfifo_fast state UNKNOWN qlen 100
link/[65534]
inet 192.168.200.1 peer 192.168.200.2/32 scope global vtun0

RX:  bytes    packets    errors    dropped    overrun    mcast
    1216         16         0         0         0         0
TX:  bytes    packets    errors    dropped    carrier    collisions
     0         0         0         0         0         0
```

show openvpn client status

Displays information on OpenVPN connections in client mode.

Syntax

```
show openvpn client status
```

Modes

Operational mode

Usage Guidelines

Use this command to display information on all OpenVPN client mode connections. This command is only available on a client-mode endpoint.

Examples

The following example shows the output of this command.

```
vyatta@vyatta:~$ show openvpn client status  
OpenVPN client status on vtun2 [openvpn client]
```

Server CN	Remote IP	Tunnel IP	TX byte	RX byte	Connected Since
N/A	172.16.117.128	N/A	6.8K	8.1K	N/A

show openvpn server status

Displays information on connected clients in server mode.

Syntax

```
show openvpn server status
```

Modes

Operational mode

Usage Guidelines

Use this command to display information on all connected clients. This command is only available on a server-mode endpoint. Also, note that the command output is not updated in real time. The time it was last updated is displayed.

Examples

The following example shows the output of this command.

```
vyatta@vyatta:~$ show openvpn server status
OpenVPN server status on vtun0 (last updated on Wed Oct 29 22:34:18 2008)

Client           Remote IP       Tunnel IP       TX byte  RX byte  Connected Since
-----
vclient1        192.168.252.3  192.168.200.4  16.0K   16.5K   Wed Oct 29 21:59:50 2008
```

show openvpn site-to-site status

Displays information on OpenVPN connections in site-to-site mode.

Syntax

```
show openvpn site-to-site status
```

Modes

Operational mode

Usage Guidelines

Use this command to display information on all connected sites. This command is only available on a site-to-site-mode endpoint.

Examples

The following example shows the output of this command.

```
vyatta@vyatta:~$ show openvpn site-to-site status
OpenVPN client status on vtun1 [openvpn with psk]
```

Remote CN	Remote IP	Tunnel IP	TX byte	RX byte	Connected	Since
None (PSK)	192.168.74.160	192.168.2.2	8.9K	8.8K	N/A	

```
OpenVPN client status on vtun0 [openvpn with tls]
```

Remote CN	Remote IP	Tunnel IP	TX byte	RX byte	Connected	Since
N/A	192.168.74.160	192.168.1.2	17.5K	15.1K	N/A	

Related commands

Commands for using other system features with OpenVPN interfaces are described in the following guides:

Related Commands Documented Elsewhere	
Bridging	Commands for configuring bridge groups on OpenVPN interfaces are described in <i>Brocade 5600 vRouter Bridging Reference Guide</i> .
Firewall	Commands for configuring firewall on OpenVPN interfaces are described in <i>Brocade 5600 vRouter Firewall Reference Guide</i> .
OSPF	Commands for configuring the Open Shortest Path First routing protocol on OpenVPN interfaces are described in <i>Brocade 5600 vRouter OSPF Reference Guide</i> .
Policy Based Routing	Commands for configuring Policy Based Routing on OpenVPN interfaces are described in <i>Brocade 5600 vRouter Policy-based Routing Reference Guide</i> .
QoS	Commands for configuring quality of service on OpenVPN interfaces are described in <i>Brocade 5600 vRouter QoS Reference Guide</i> .
RIP	Commands for configuring the Routing Information Protocol on OpenVPN interfaces are described in <i>Brocade 5600 vRouter RIP Reference Guide</i> .
RIPng	Commands for configuring RIPng on OpenVPN interfaces are described in <i>Brocade 5600 vRouter RIPng Reference Guide</i> .

List of Acronyms

Acronym	Description
ACL	access control list
ADSL	Asymmetric Digital Subscriber Line
AH	Authentication Header
AMI	Amazon Machine Image
API	Application Programming Interface
AS	autonomous system
ARP	Address Resolution Protocol
AWS	Amazon Web Services
BGP	Border Gateway Protocol
BIOS	Basic Input Output System
BPDU	Bridge Protocol Data Unit
CA	certificate authority
CCMP	AES in counter mode with CBC-MAC
CHAP	Challenge Handshake Authentication Protocol
CLI	command-line interface
DDNS	dynamic DNS
DHCP	Dynamic Host Configuration Protocol
DHCPv6	Dynamic Host Configuration Protocol version 6
DLCI	data-link connection identifier
DMI	desktop management interface
DMVPN	dynamic multipoint VPN
DMZ	demilitarized zone
DN	distinguished name
DNS	Domain Name System
DSCP	Differentiated Services Code Point
DSL	Digital Subscriber Line
eBGP	external BGP
EBS	Amazon Elastic Block Storage
EC2	Amazon Elastic Compute Cloud
EGP	Exterior Gateway Protocol
ECMP	equal-cost multipath
ESP	Encapsulating Security Payload
FIB	Forwarding Information Base
FTP	File Transfer Protocol
GRE	Generic Routing Encapsulation
HDLC	High-Level Data Link Control
I/O	Input/Output
ICMP	Internet Control Message Protocol

Acronym	Description
IDS	Intrusion Detection System
IEEE	Institute of Electrical and Electronics Engineers
IGMP	Internet Group Management Protocol
IGP	Interior Gateway Protocol
IPS	Intrusion Protection System
IKE	Internet Key Exchange
IP	Internet Protocol
IPOA	IP over ATM
IPsec	IP Security
IPv4	IP Version 4
IPv6	IP Version 6
ISAKMP	Internet Security Association and Key Management Protocol
ISM	Internet Standard Multicast
ISP	Internet Service Provider
KVM	Kernel-Based Virtual Machine
L2TP	Layer 2 Tunneling Protocol
LACP	Link Aggregation Control Protocol
LAN	local area network
LDAP	Lightweight Directory Access Protocol
LLDP	Link Layer Discovery Protocol
MAC	medium access control
mGRE	multipoint GRE
MIB	Management Information Base
MLD	Multicast Listener Discovery
MLPPP	multilink PPP
MRRU	maximum received reconstructed unit
MTU	maximum transmission unit
NAT	Network Address Translation
NBMA	Non-Broadcast Multi-Access
ND	Neighbor Discovery
NHRP	Next Hop Resolution Protocol
NIC	network interface card
NTP	Network Time Protocol
OSPF	Open Shortest Path First
OSPFv2	OSPF Version 2
OSPFv3	OSPF Version 3
PAM	Pluggable Authentication Module
PAP	Password Authentication Protocol
PAT	Port Address Translation
PCI	peripheral component interconnect
PIM	Protocol Independent Multicast
PIM-DM	PIM Dense Mode

Acronym	Description
PIM-SM	PIM Sparse Mode
PKI	Public Key Infrastructure
PPP	Point-to-Point Protocol
PPPoA	PPP over ATM
PPPoE	PPP over Ethernet
PPTP	Point-to-Point Tunneling Protocol
PTMU	Path Maximum Transfer Unit
PVC	permanent virtual circuit
QoS	quality of service
RADIUS	Remote Authentication Dial-In User Service
RHEL	Red Hat Enterprise Linux
RIB	Routing Information Base
RIP	Routing Information Protocol
RIPng	RIP next generation
RP	Rendezvous Point
RPF	Reverse Path Forwarding
RSA	Rivest, Shamir, and Adleman
Rx	receive
S3	Amazon Simple Storage Service
SLAAC	Stateless Address Auto-Configuration
SNMP	Simple Network Management Protocol
SMTP	Simple Mail Transfer Protocol
SONET	Synchronous Optical Network
SPT	Shortest Path Tree
SSH	Secure Shell
SSID	Service Set Identifier
SSM	Source-Specific Multicast
STP	Spanning Tree Protocol
TACACS+	Terminal Access Controller Access Control System Plus
TBF	Token Bucket Filter
TCP	Transmission Control Protocol
TKIP	Temporal Key Integrity Protocol
ToS	Type of Service
TSS	TCP Maximum Segment Size
Tx	transmit
UDP	User Datagram Protocol
VHD	virtual hard disk
vif	virtual interface
VLAN	virtual LAN
VPC	Amazon virtual private cloud
VPN	virtual private network
VRRP	Virtual Router Redundancy Protocol

Acronym	Description
WAN	wide area network
WAP	wireless access point
WPA	Wired Protected Access